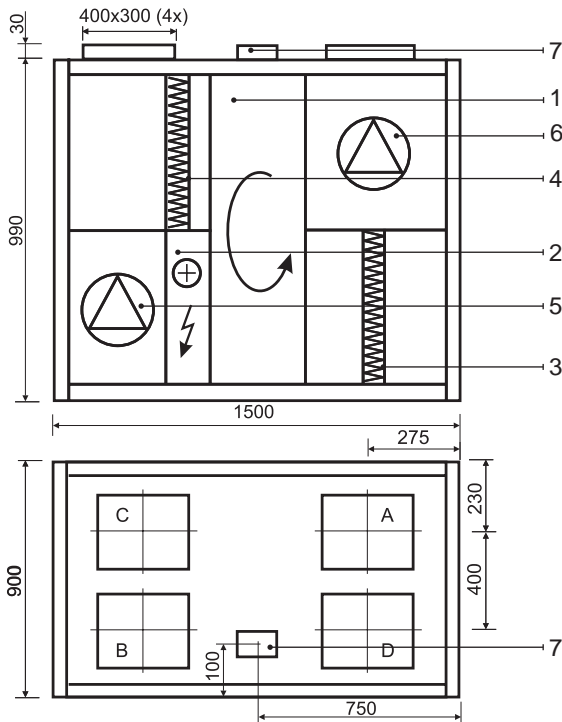


KOMFOVENT KOMPAKT REGO 1600

REGO 1600VE-AC / REGO 1600VE-EC



Technical data

REGO 1600VE-AC/VE-EC (vertical)

Panel thickness	45 mm
Unit weight	270 kg
Nominal air flow	1600 m ³ /h
Supply voltage	3~ 400/50 V/Hz
Maximal operating current	14/12,8 A
Control system	KOMFOVENT C3

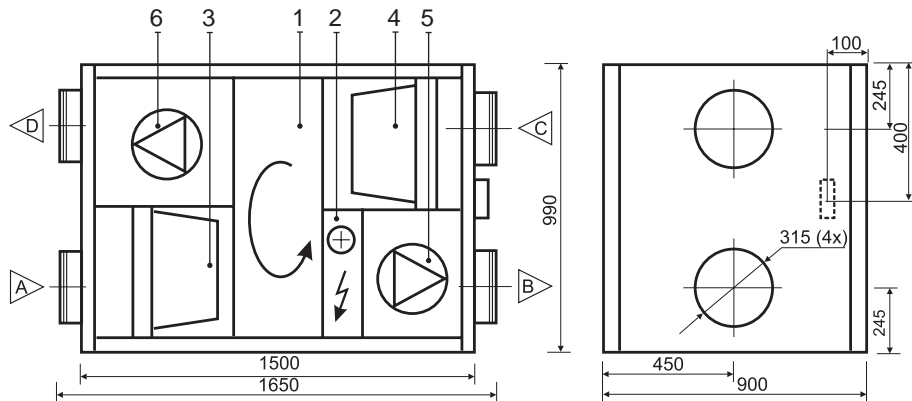
REGO 1600HE-AC/HE-EC (horizontal)

Panel thickness	45 mm
Unit weight	280 kg
Nominal air flow	1600 m ³ /h
Supply voltage	3~ 400/50 V/Hz
Maximal operating current	14/12,8 A
Control system	KOMFOVENT C3

Design:

- | | |
|--------------------------|------------------|
| 1. Rotary heat exchanger | A Outdoor intake |
| 2. Electric air heater | B Supply air |
| 3. Supply air filter | C Extract indoor |
| 4. Exhaust air filter | D Exhaust air |
| 5. Supply fan | |
| 6. Exhaust fan | |
| 7. Main switch | |

REGO 1600HE-AC / REGO 1600HE-EC



Thermal Efficiency (1600 m³/h)

Parameters	Supply				Exhaust	Unit
Intake						
Temperature	-15	-10	-5	0	20	°C
Relative humidity	82	82	82	82	45	%
Supply						
Temperature	11,4	12,6	13,8	15,1		°C
Relative humidity	54	46	39	34		%

Acoustic Data

Speed	EC		AC		Unit
	max	1	2	3	
Supply air flow (into air ducts)					
Intake	55	45	48	52	LWA dB(A)
Supply	67	57	61	63	
Exhaust air flow (into air ducts)					
Intake	55	46	49	52	LWA dB(A)
Supply	67	57	61	63	
Surrounding	43	36	38	40	Lp3 dB(A)

Parameters	Supply	Exhaust	Unit
Nominal air flow	1600	1600	m ³ /h

Air Filters

Filter class	F5	F5	
Type	Bag filter/ Panel	Bag filter/ Panel	
Dimensions b x h x l	792x392x360 (46*)	792x392x360 (46*)	mm

Fans Motors

Type	AC/EC	AC/EC	
Input power	485/485	485/485	W
Rotation speed	1400/2250	1400/2250	rpm
Protection level	IP 55/44	IP 55/44	IEC 34-5

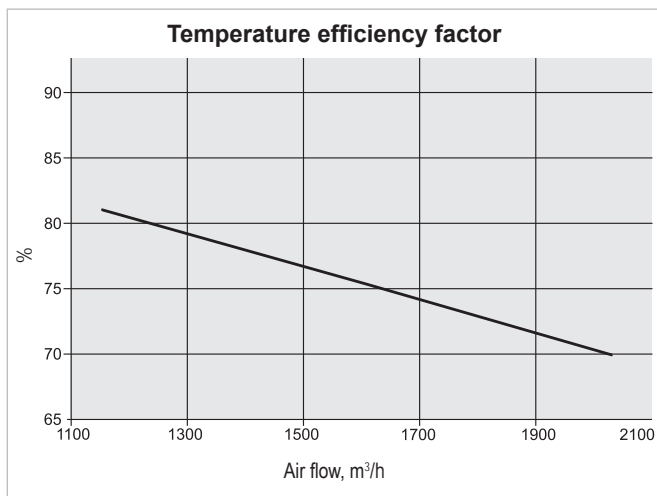
Rotary Heat Exchanger

Thermal efficiency	75,3		%
Energy recovery	17,4		kW
Air temperature in/out	-23/9,4	20/-12,4	°C
Relative humidity in/out	82/67	40/98	%

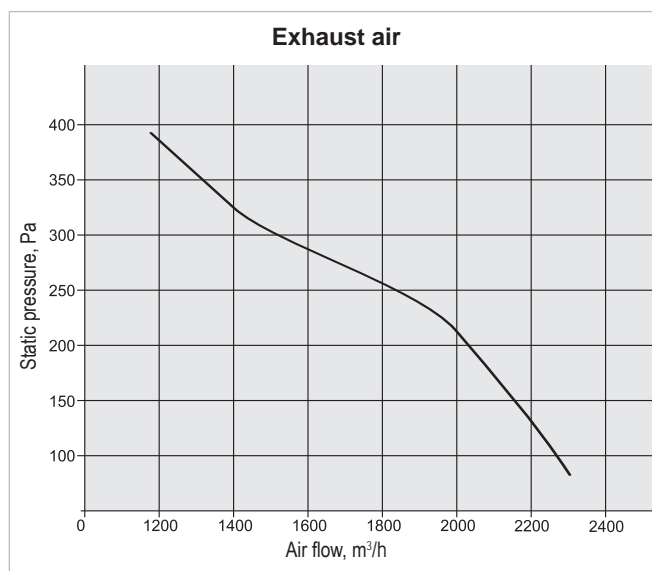
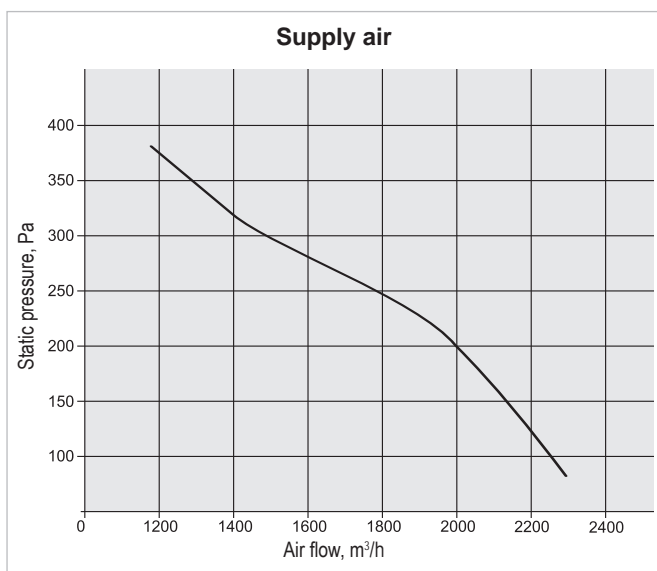
Electric Air Heater

Capacity	4,5		kW
Air temperature in/out	9,4/18		°C

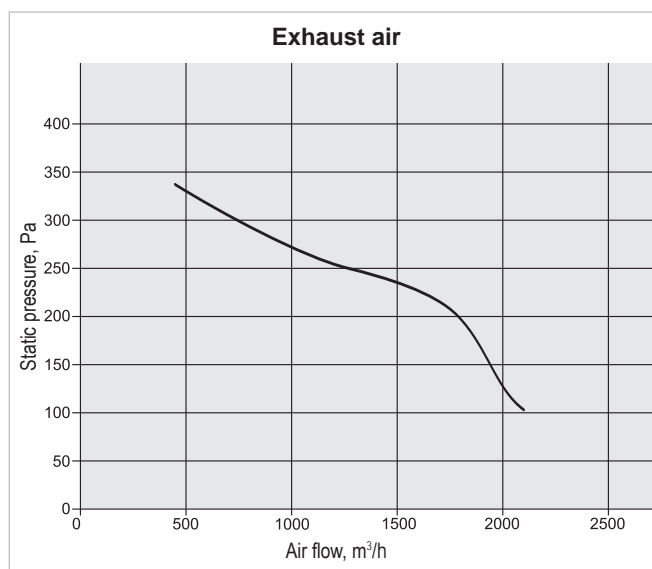
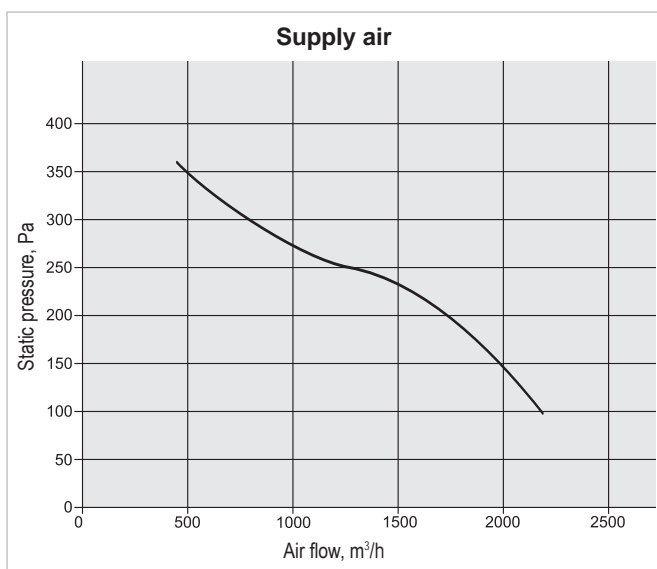
* panel filters 46 mm tickness for vertical units.



Performance REGO 1600VE-EC / REGO 1600HE-EC



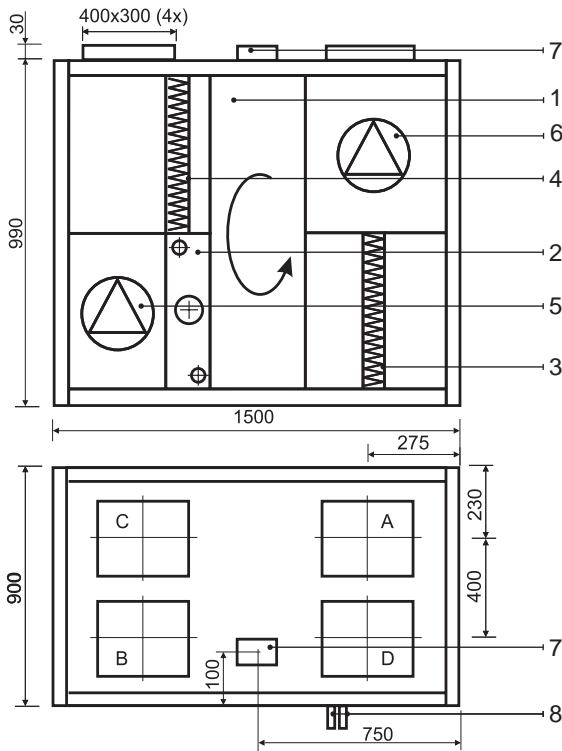
Performance REGO 1600VE-AC / REGO 1600HE-AC



Correction factor for F7 class filter approximately – 70 Pa.

KOMFOVENT KOMPAKT REGO 1600

REGO 1600VW-AC / REGO 1600VW-EC



Technical data

REGO 1600VW-AC/VW-EC (vertical)

Panel thickness	45 mm
Unit weight	275 kg
Nominal air flow	1600 m ³ /h
Supply voltage	1~ 230/50 V/Hz
Maximal operating current	8/6,8 A
Control system	KOMFOVENT C3

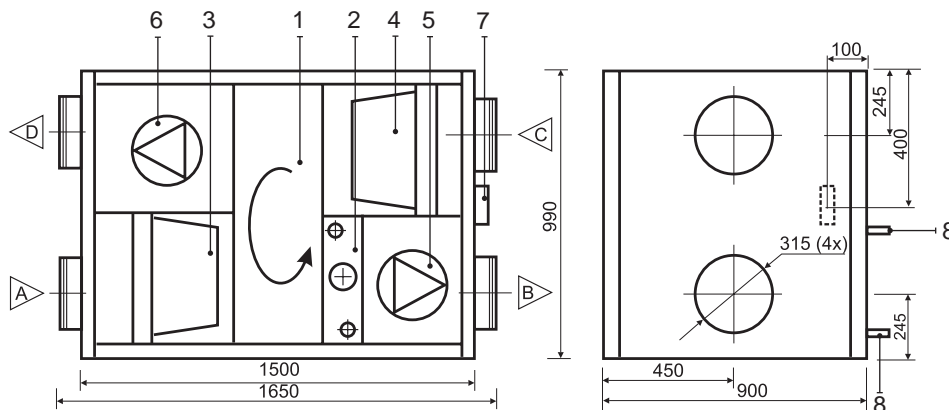
REGO 1600HW-AC/HW-EC (horizontal)

Panel thickness	45 mm
Unit weight	280 kg
Nominal air flow	1600 m ³ /h
Supply voltage	1~ 230/50 V/Hz
Maximal operating current	8/6,8 A
Control system	KOMFOVENT C3

Design:

- | | |
|--------------------------|------------------|
| 1. Rotary heat exchanger | A Outdoor intake |
| 2. Hot water air heater | B Supply air |
| 3. Supply air filter | C Extract indoor |
| 4. Exhaust air filter | D Exhaust air |
| 5. Supply fan | |
| 6. Exhaust fan | |
| 7. Main switch | |
| 8. Fluid connection tube | |

REGO 1600HW-AC / REGO 1600HW-EC



Thermal Efficiency (1600 m³/h)

Parameters	Supply				Exhaust	Unit
Intake						
Temperature	-15	-10	-5	0	20	°C
Relative humidity	82	82	82	82	45	%
Supply						
Temperature	11,4	12,6	13,8	15,1		°C
Relative humidity	54	46	39	34		%

Acoustic Data

	EC		AC		Unit
	max	1	2	3	
Supply air flow (into air ducts)					
Intake	54	46	48	51	LWA dB(A)
Supply	67	57	61	63	
Exhaust air flow (into air ducts)					
Intake	55	46	49	52	LWA dB(A)
Supply	67	57	61	63	
Surrounding	43	36	38	40	Lp3 dB(A)

Parameters	Supply	Exhaust	Unit
Nominal air flow	1600	1600	m ³ /h

Air Filters

Filter class	F5	F5	
Type	Bag filter/ Panel	Bag filter/ Panel	
Dimensions bxxhxl	792x392x360 (46*)	792x392x360 (46*)	mm

Fans Motors

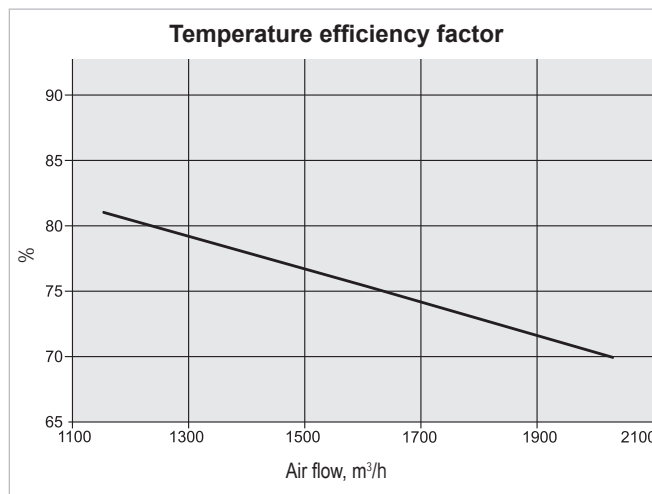
Type	AC/EC	AC/EC	
Input power	485/485	485/485	W
Rotation speed	1400/2250	1400/2250	rpm
Protection level	IP 55/44	IP 55/44	IEC 34-5

Rotary Heat Exchanger

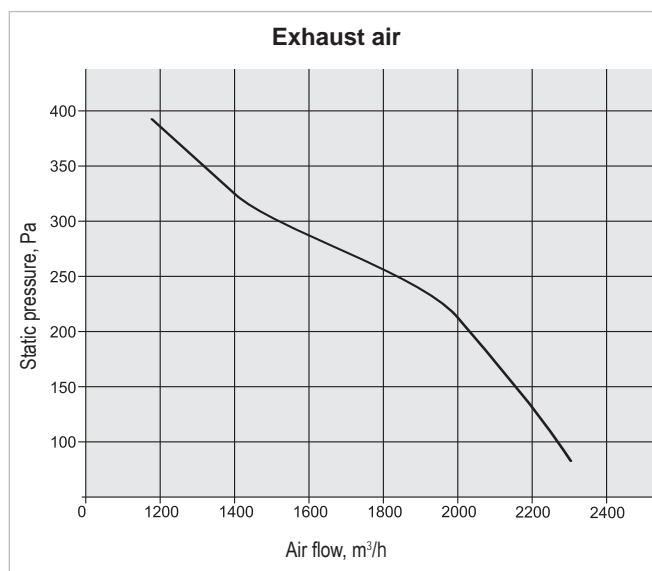
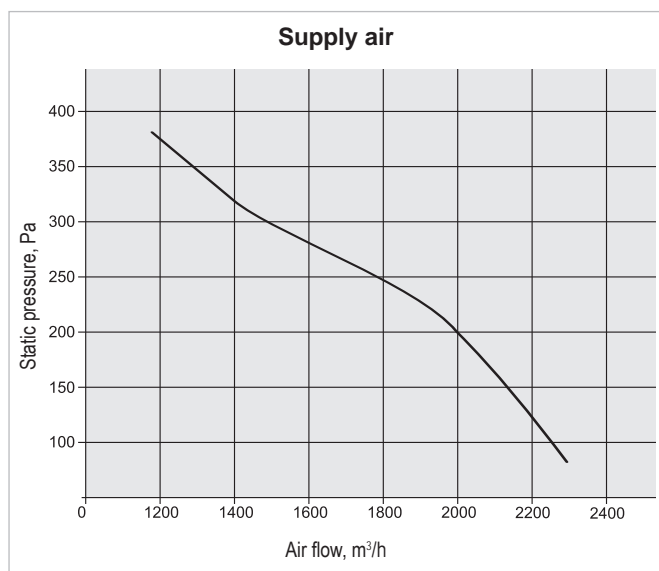
Thermal efficiency	75,3		%
Energy recovery	17,4		kW
Air temperature in/out	-23/9,4	20/-12,4	°C
Relative humidity in/out	82/67	40/98	%

* panel filters 46 mm tickness for vertical units.

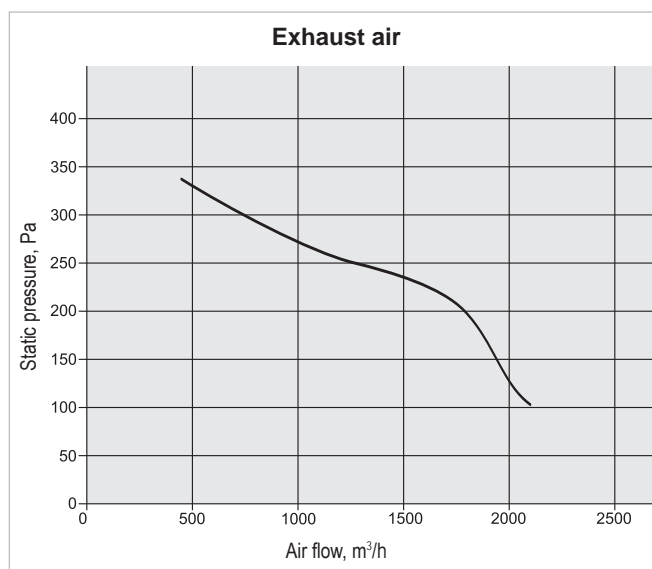
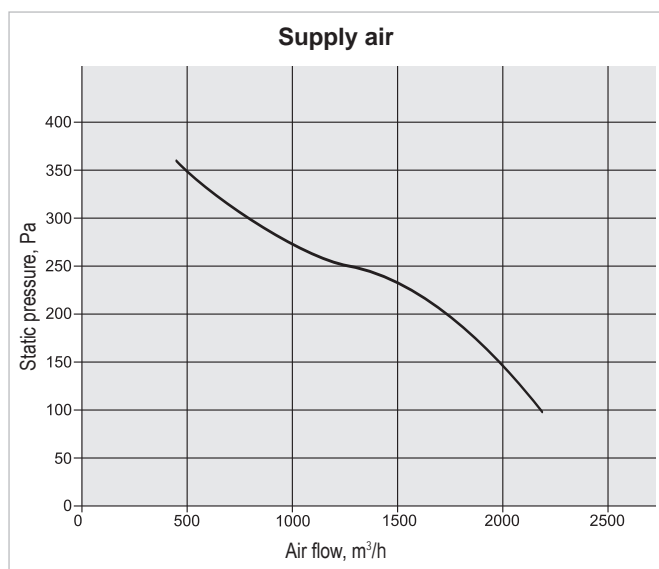
Parameters				Unit
Hot Water Air Heater				
Water temperature in/out	90/70	80/60	70/50	°C
Capacity	7,9	6,25	5,2	kW
Flow rate	347	274	225	dm ³ /h
Pressure drop	2	1	1	kPa
Connection	1/2			"
Air flow 1600 m ³ /h temperature in/out	9,4/24	9,4/21	9,4/19	°C



Performance REGO 1600VW-EC / REGO 1600HW-EC



Performance REGO 1600VW-AC / REGO 1600HW-AC



Correction factor for F7 class filter approximately – 70 Pa.