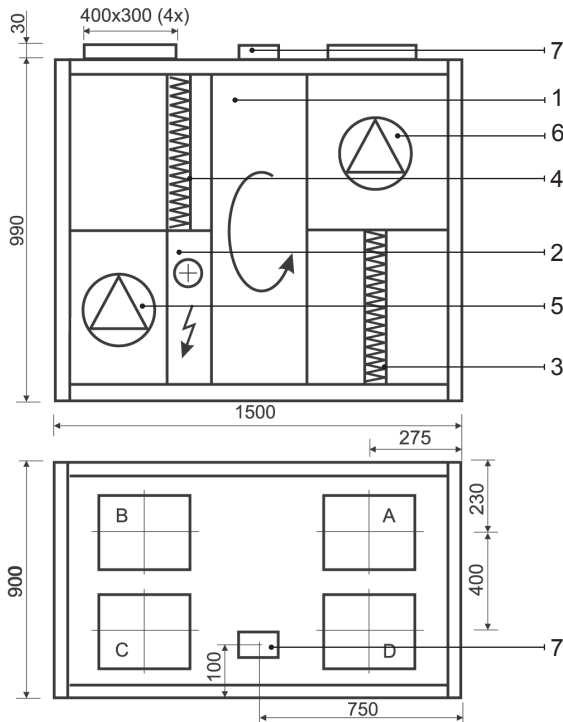


KOMFOVENT KOMPAKT REGO 1600

komfovent
kompakt

REGO 1600VE-EC



Technical data

REGO 1600VE-EC (vertical)

Panel thickness	45 mm
Unit weight	270 kg
Nominal air flow	1600 m ³ /h
Supply voltage	3~ 400/50 V/Hz
Maximal operating current	11,9 A
Control system	KOMFOVENT C3

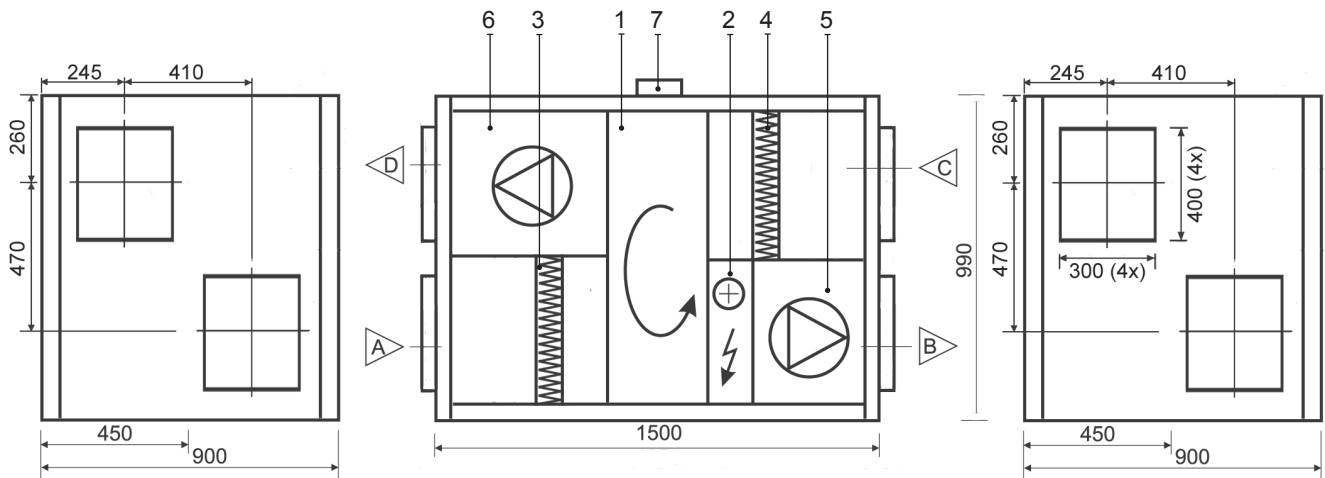
REGO 1600HE-EC (horizontal)

Panel thickness	45 mm
Unit weight	280 kg
Nominal air flow	1600 m ³ /h
Supply voltage	3~ 400/50 V/Hz
Maximal operating current	11,9 A
Control system	KOMFOVENT C3

Design:

- | | |
|--------------------------|------------------|
| 1. Rotary heat exchanger | A Outdoor intake |
| 2. Electric air heater | B Supply air |
| 3. Supply air filter | C Extract indoor |
| 4. Exhaust air filter | D Exhaust air |
| 5. Supply fan | |
| 6. Exhaust fan | |
| 7. Main switch | |

REGO 1600HE-EC



Thermal Efficiency (1600 m³/h)

Parameters	Supply				Exhaust	Unit
Intake						
Temperature	-15	-10	-5	0	20	°C
Relative humidity	82	82	82	82	45	%
Supply						
Temperature	11,4	12,6	13,9	15,1		°C
Relative humidity	63	54	46	41		%

Acoustic Data (maximal air flow)

		63	125	250	500	1000	2000	4000	8000	dB (A)
Supply	Inlet	56	60	63	64	57	49	43	36	63,3
	Outlet	58	65	69	69	63	54	50	45	68,7
Exhaust	Inlet	56	60	63	64	57	49	43	37	63,3
	Outlet	58	65	69	69	63	54	50	45	68,7
Surrounding at 3m		46	51	50	52	36	29	20	15	49,9

Parameters	Supply	Exhaust	Unit
Nominal air flow	1600	1600	m ³ /h

Air Filters

Filter class	F5	F5	
Type	Panel	Panel	
Dimensions b x h x l	800x450x46	800x450x46	mm

Fans Motors

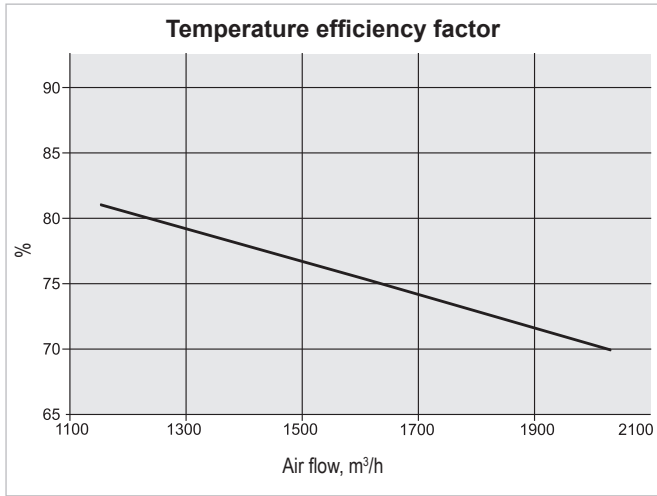
Type	EC	EC	
Input power	455	455	W
Rotation speed	2600	2600	rpm
Protection level	IP 54	IP 54	IEC 34-5

Rotary Heat Exchanger

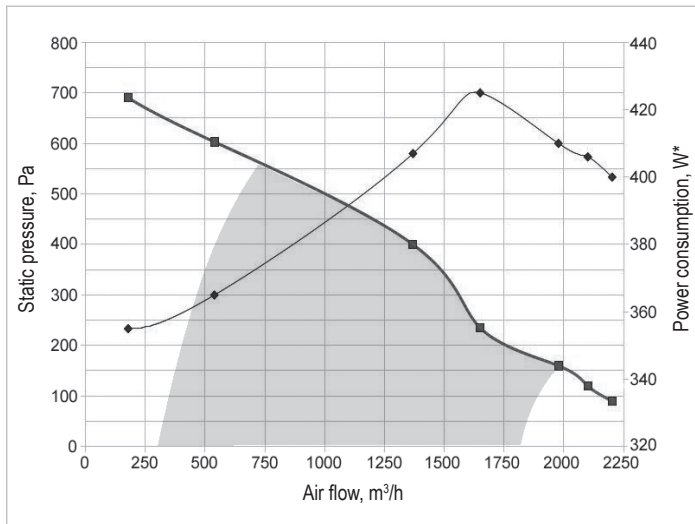
Thermal efficiency	75,3		%
Energy recovery	17,4		kW
Air temperature in/out	-23/9,4	20/-12,4	°C
Relative humidity in/out	82/67	40/98	%

Electric Air Heater

Capacity	4,5		kW
Air temperature in/out	9,4/18		°C



Performance REGO 1600VE-EC / REGO 1600HE-EC

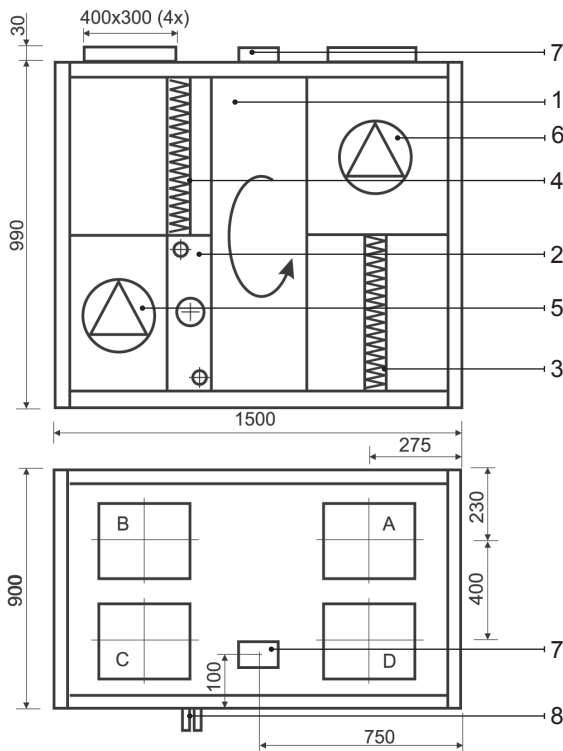


■ - air handling unit working zone

* - fans' one motor

Correction factor for F7 class filter approximately – 70 Pa.

REGO 1600VW-EC



Technical data

REGO 1600VW-EC (vertical)

Panel thickness	45 mm
Unit weight	275 kg
Nominal air flow	1600 m ³ /h
Supply voltage	1~ 230/50 V/Hz
Maximal operating current	6,6 A
Control system	KOMFOVENT C3

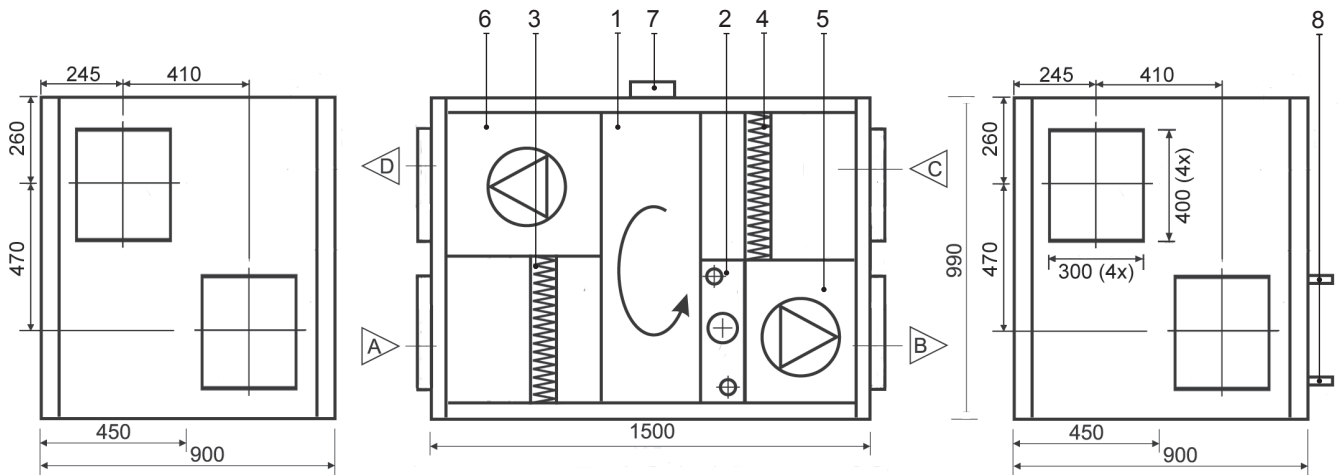
REGO 1600HW-EC (horizontal)

Panel thickness	45 mm
Unit weight	280 kg
Nominal air flow	1600 m ³ /h
Supply voltage	1~ 230/50 V/Hz
Maximal operating current	6,6 A
Control system	KOMFOVENT C3

Design:

- | | |
|--------------------------|------------------|
| 1. Rotary heat exchanger | A Outdoor intake |
| 2. Hot water air heater | B Supply air |
| 3. Supply air filter | C Extract indoor |
| 4. Exhaust air filter | D Exhaust air |
| 5. Supply fan | |
| 6. Exhaust fan | |
| 7. Main switch | |
| 8. Fluid connection tube | |

REGO 1600HW-EC



Thermal Efficiency (1600 m³/h)

Parameters	Supply				Exhaust	Unit
Intake						
Temperature	-15	-10	-5	0	20	°C
Relative humidity	82	82	82	82	45	%
Supply						
Temperature	11,4	12,6	13,8	15,1		°C
Relative humidity	54	46	39	34		%

Acoustic Data (maximal air flow)

		63	125	250	500	1000	2000	4000	8000	dB (A)
Supply	Inlet	56	60	63	64	57	49	43	36	63,3
	Outlet	58	65	69	69	63	54	50	45	68,7
Exhaust	Inlet	56	60	63	64	57	49	43	37	63,3
	Outlet	58	65	69	69	63	54	50	45	68,7
Surrounding at 3m		46	51	50	52	36	29	20	15	49,9

Parameters	Supply	Exhaust	Unit
Nominal air flow	1600	1600	m ³ /h

Air Filters

Filter class	F5	F5	
Type	Panel	Panel	
Dimensions b x h x l	800x450x46	800x450x46	mm

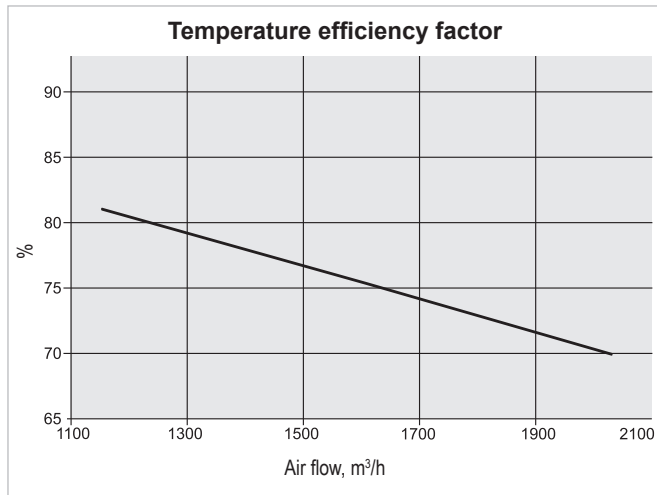
Fans Motors

Type	EC	EC	
Input power	455	455	W
Rotation speed	2600	2600	rpm
Protection level	IP 54	IP 54	IEC 34-5

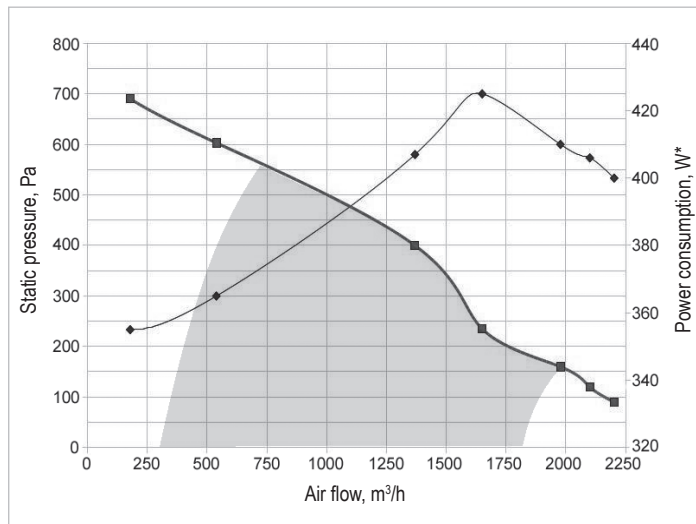
Rotary Heat Exchanger

Thermal efficiency	75,4		%
Energy recovery	17,4		kW
Air temperature in/out	-23/9,4	20/-12,4	°C
Relative humidity in/out	82/67	40/98	%

Parameters							Unit
Hot Water Air Heater							
Water temperature in/out	90/70	80/60	60/40	45/35	7/12	7/12	°C
Capacity	8,4	8,5	8,5	8,57	10,97	9,56	kW
Flow rate	371	373	370	744	1883	1640	dm ³ /h
Pressure drop	0,2	0,2	0,3	1	5,6	4,4	kPa
Connection	1						"
Air flow 1600 m ³ /h temperature in/out	7-22,2	7-22,4	7-22,4	7-22,5	30/50 - 17,7/82	26/70 - 17,6/89	°C



Performance REGO 1600VW-EC / REGO 1600HW-EC



■ - air handling unit working zone

* - fans' one motor

Correction factor for F7 class filter approximately – 70 Pa.