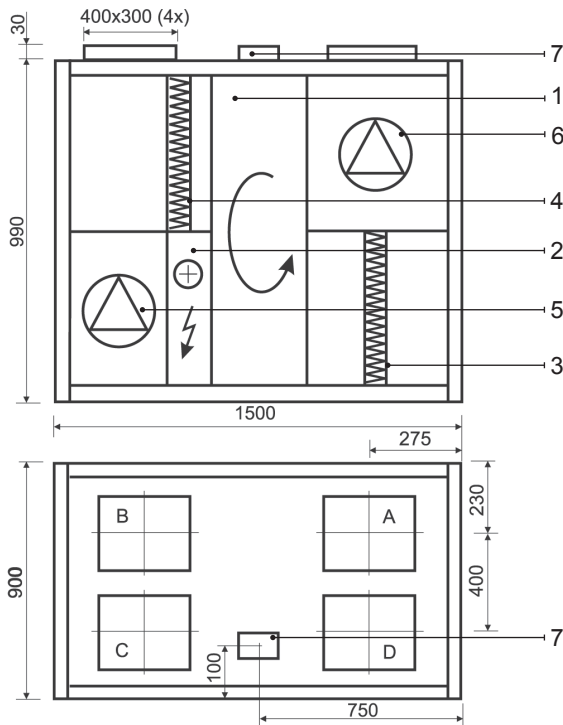


REGO 2500VE-EC



Technical data

REGO 2500VE-EC (vertical)

Panel thickness	45 mm
Unit weight	285 kg
Nominal air flow	2500 m ³ /h
Supply voltage	3~ 400/50 V/Hz
Maximal operating current	17,2 A
Control system	KOMFOVENT C3

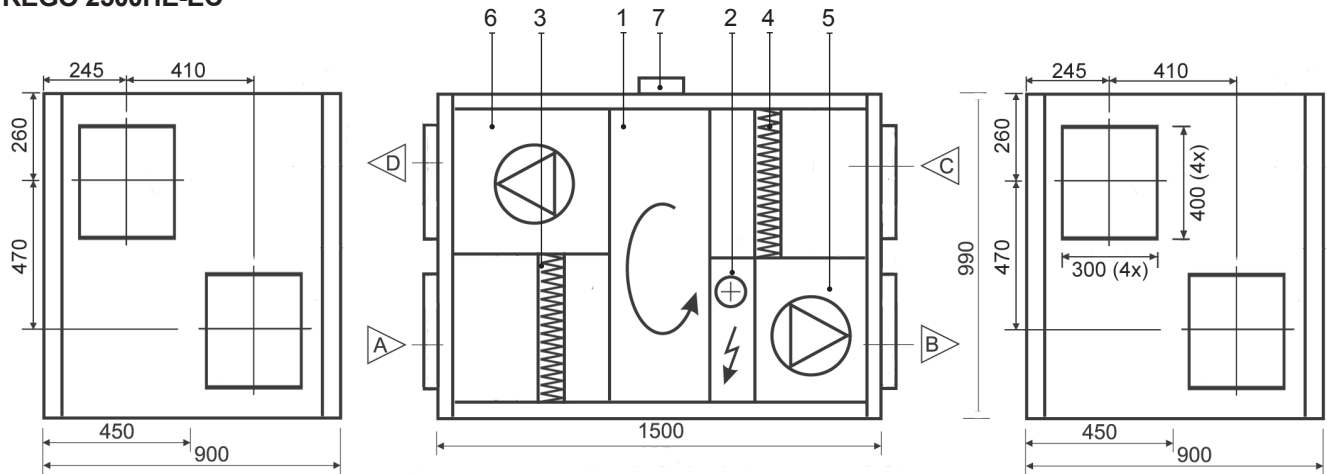
REGO 2500HE-EC (horizontal)

Panel thickness	45 mm
Unit weight	290 kg
Nominal air flow	2500 m ³ /h
Supply voltage	3~ 400/50 V/Hz
Maximal operating current	17,2 A
Control system	KOMFOVENT C3

Design:

- | | |
|--------------------------|------------------|
| 1. Rotary heat exchanger | A Outdoor intake |
| 2. Electric air heater | B Supply air |
| 3. Supply air filter | C Extract indoor |
| 4. Exhaust air filter | D Exhaust air |
| 5. Supply fan | |
| 6. Exhaust fan | |
| 7. Main switch | |

REGO 2500HE-EC



Thermal Efficiency (2500 m³/h)

Parameters	Supply				Exhaust	Unit
Intake						
Temperature	-15	-10	-5	0	20	°C
Relative humidity	82	82	82	82	45	%
Supply						
Temperature	9,4	11	12,5	14		°C
Relative humidity	66	55	46	40		%

Acoustic Data (maximal air flow)

		63	125	250	500	1000	2000	4000	8000	dB (A)
Supply	Inlet	59	63	66	67	60	52	46	40	66,3
	Outlet	62	70	75	73	69	60	53	48	73,8
Exhaust	Inlet	59	63	66	67	60	52	46	40	66,3
	Outlet	62	70	75	73	69	60	53	48	73,8
Surrounding at 3m		48	53	52	54	38	32	23	17	51,9

Parameters	Supply	Exhaust	Unit
Nominal air flow	2500	2500	m ³ /h

Air Filters

Filter class	F5	F5	
Type	Panel	Panel	
Dimensions b x h x l	800x450x46	800x450x46	mm

Fans Motors

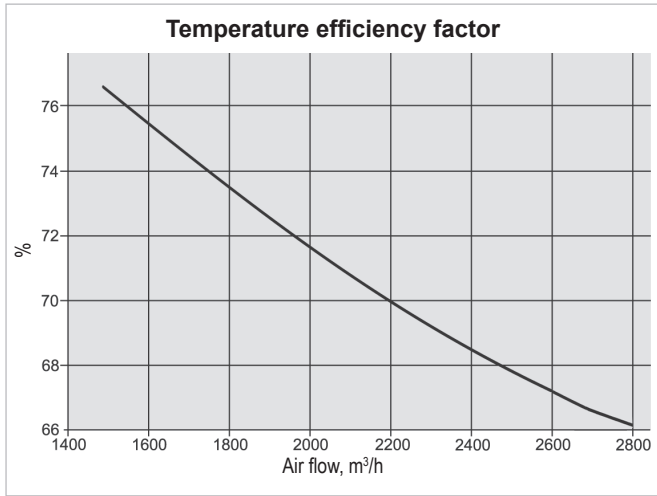
Type	EC	EC	
Input power	670	670	W
Rotation speed	2800	2800	rpm
Protection level	IP 54	IP 54	IEC 34-5

Rotary Heat Exchanger

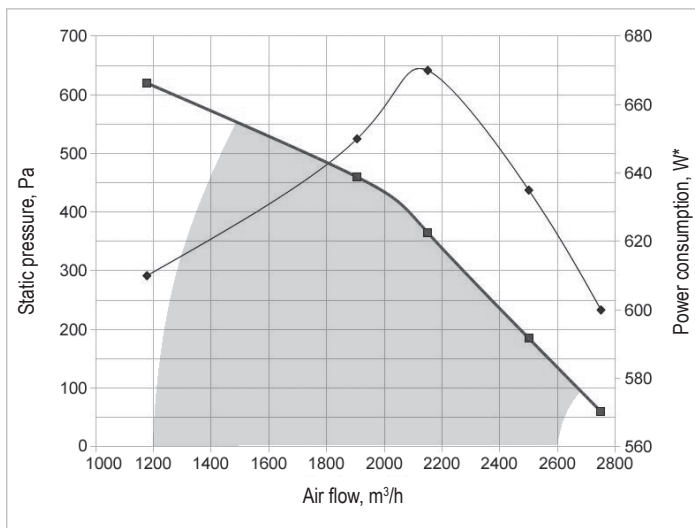
Thermal efficiency	71,7		%
Energy recovery	20,8		kW
Air temperature in/out	-23/7,8	20/-10,8	°C
Relative humidity in/out	82/72	40/98	%

Electric Air Heater

Capacity	7,5		kW
Air temperature in/out	7,8/19,2		°C



Performance REGO 2500VE-EC / REGO 2500HE-EC

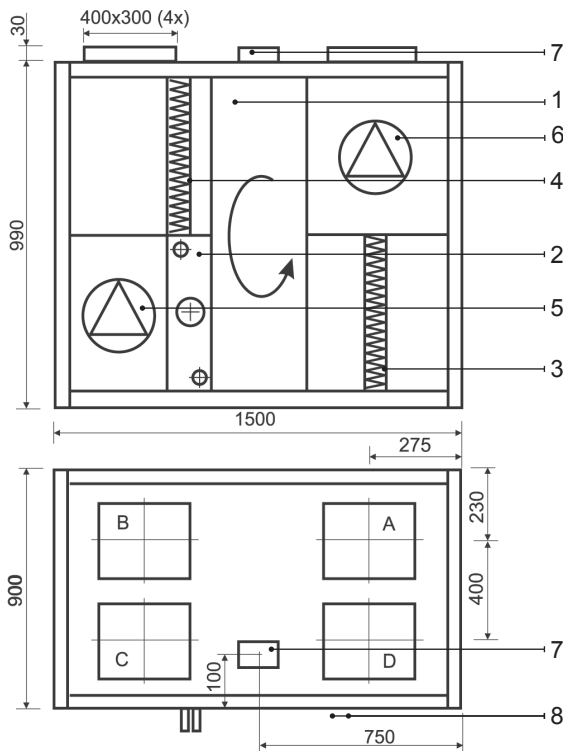


■ - air handling unit working zone

* - fans' one motor

Correction factor for F7 class filter approximately – 70 Pa.

REGO 2500VW-EC



Technical data

REGO 2500VW-EC (vertical)

Panel thickness	45 mm
Unit weight	285 kg
Nominal air flow	2000 m ³ /h
Supply voltage	1~ 230/50 V/Hz
Maximal operating current	6,8 A
Control system	KOMFOVENT C3

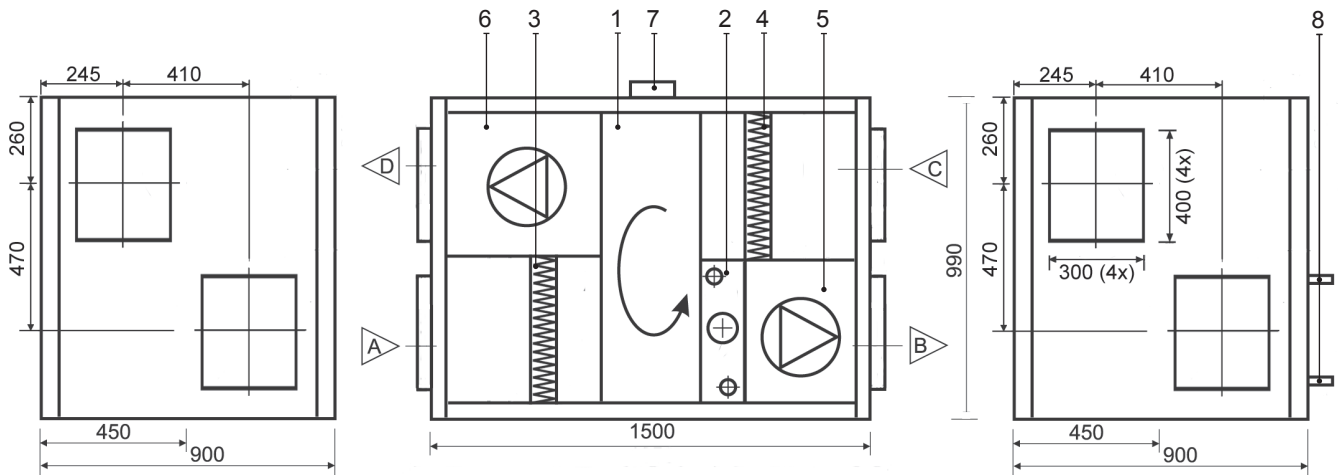
REGO 2500HW-EC (horizontal)

Panel thickness	45 mm
Unit weight	290 kg
Nominal air flow	2000 m ³ /h
Supply voltage	1~ 230/50 V/Hz
Maximal operating current	6,8 A
Control system	KOMFOVENT C3

Design:

- | | |
|--------------------------|------------------|
| 1. Rotary heat exchanger | A Outdoor intake |
| 2. Hot water air heater | B Supply air |
| 3. Supply air filter | C Extract indoor |
| 4. Exhaust air filter | D Exhaust air |
| 5. Supply fan | |
| 6. Exhaust fan | |
| 7. Main switch | |
| 8. Fluid connection tube | |

REGO 2500HW-EC



Thermal Efficiency (2500 m³/h)

Parameters	Supply				Exhaust	Unit
	-15	-10	-5	0		
Intake						
Temperature	-15	-10	-5	0	20	°C
Relative humidity	82	82	82	82	45	%
Supply						
Temperature	9,4	11	12,5	14		°C
Relative humidity	66	55	46	40		%

Acoustic Data (maximal air flow)

		63	125	250	500	1000	2000	4000	8000	dB (A)
Supply	Inlet	59	63	66	67	60	52	46	40	66,3
	Outlet	62	70	75	73	69	60	53	48	73,8
Exhaust	Inlet	59	63	66	67	60	52	46	40	66,3
	Outlet	62	70	75	73	69	60	53	48	73,8
Surrounding at 3m		48	53	52	54	38	32	23	17	51,9

Parameters	Supply	Exhaust	Unit
Nominal air flow	2500	2500	m ³ /h
Air Filters			
Filter class	F5	F5	
Type	Panel	Panel	
Dimensions b x h x l	800x450x46	800x450x46	mm

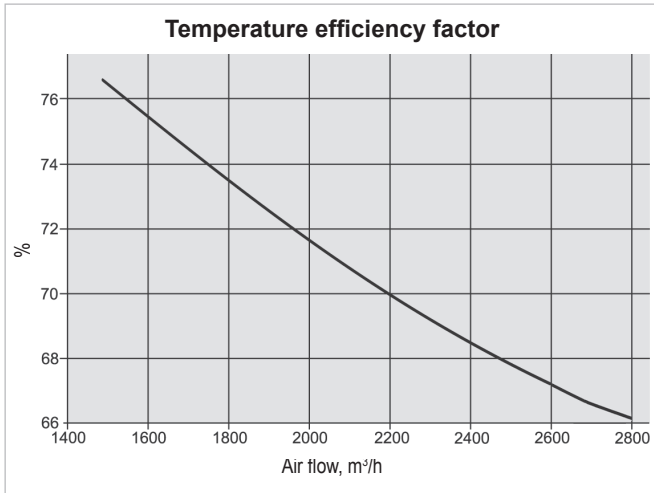
Fans Motors

Type	EC	EC	
Input power	670	670	W
Rotation speed	2800	2800	rpm
Protection level	IP 54	IP 54	IEC 34-5

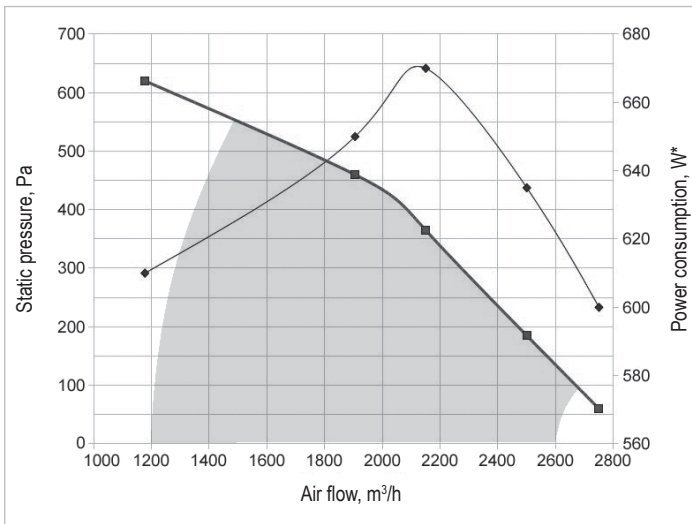
Rotary Heat Exchanger

Thermal efficiency	72,9		%
Energy recovery	21,1		kW
Air temperature in/out	-23/8,4	20/-11,4	°C
Relative humidity in/out	82/71	40/98	%

Parameters							Unit
Hot Water Air Heater							
Water temperature in/out	90/70	80/60	60/40	45/35	7/12	7/12	°C
Capacity	12,96	13	12,9	12,99	14,86	12,84	kW
Flow rate	572	571	562	1128	2551	2204	dm ³ /h
Pressure drop	0,5	0,5	0,5	1,9	9,6	7,4	kPa
Connection	1						"
Air flow 2500 m ³ /h temperature in/out	7-22	7-22,1	7-22	7-22,1	30/50 - 19,3/77	26/70 - 18,8/87	°C



Performance REGO 2500VW-EC / REGO 2500HW-EC



■ - air handling unit working zone

* - fans' one motor

Correction factor for F7 class filter approximately – 70 Pa.