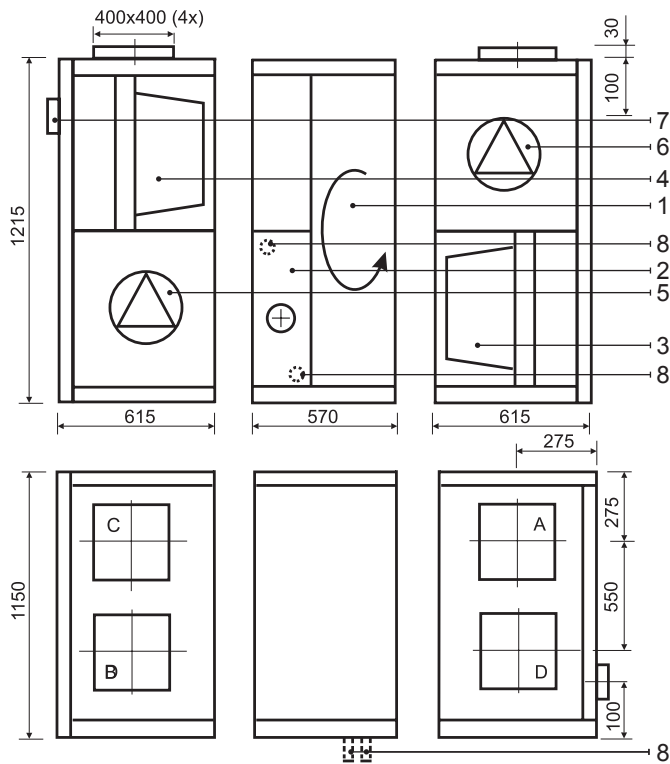


KOMFOVENT KOMPAKT REGO 3000

REGO 3000VE-EC / REGO 3000VW-EC



Technical data

REGO 3000VE-EC/VW-EC (vertical)

Panel thickness	45 mm
Unit weight	440 kg
Nominal air flow	3000 m ³ /h
Supply voltage	3~ 400/50 V/Hz
Maximal operating current	17,2/4,7 A
Control system	KOMFOVENT C3

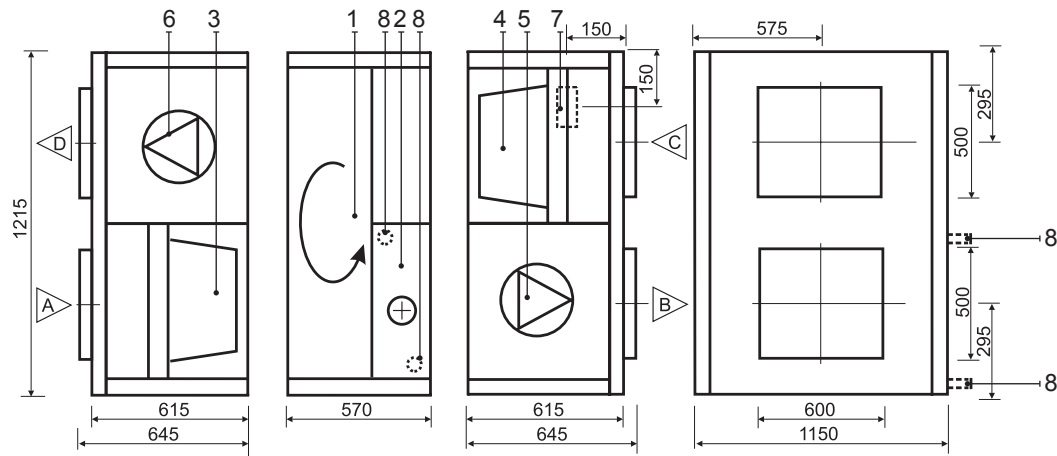
REGO 3000HE-AC/HW-AC (horizontal)

Panel thickness	45 mm
Unit weight	440 kg
Nominal air flow	3000 m ³ /h
Supply voltage	3~ 400/50 V/Hz
Maximal operating current	22,1/9,5 A
Control system	KOMFOVENT C3

Design:

1. Rotary heat exchanger
 2. Electric or hot water air heater
 3. Supply air filter
 4. Exhaust air filter
 5. Supply fan
 6. Exhaust fan
 7. Main switch
 8. Fluid connection tube
- A Outdoor intake
B Supply air
C Extract indoor
D Exhaust air

REGO 3000HE-AC / REGO 3000HW-AC



Thermal Efficiency (3000 m³/h)

Parameters	Supply				Exhaust	Unit
Intake						
Temperature	-15	-10	-5	0	20	°C
Relative humidity	82	82	82	82	45	%
Supply						
Temperature	11,3	12,5	13,8	15		°C
Relative humidity	54	46	39	34		%

Acoustic Data

	AC	EC	Unit
Supply air flow (into air ducts)			
Intake	75	61	LWA dB(A)
Supply	87	75	
Exhaust air flow (into air ducts)			
Intake	76	62	LWA dB(A)
Supply	87	75	
Surrounding	56	50	Lp3 dB(A)

Parameters	Supply	Exhaust	Unit
Nominal air flow	3000	3000	m ³ /h

Air Filters

Filter class	F5	F5	
Type	Bag filter	Bag filter	
Dimensions b x h x l	892x490x300	892x490x300	mm

Fans Motors

Type	AC/EC	AC/EC	
Input power	1100/994	1100/994	W
Rotation speed	2850/2640	2850/2640	rpm
Protection level	IP 55/44	IP 55/44	IEC 34-5

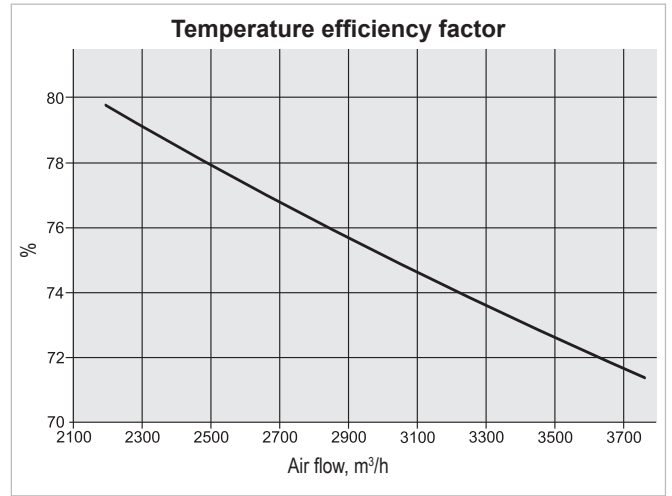
Rotary Heat Exchanger

Thermal efficiency	75,1		%
Energy recovery	32,6		kW
Air temperature in/out	-23/9,3	20/-12,3	°C
Relative humidity in/out	82/68	40/98	%

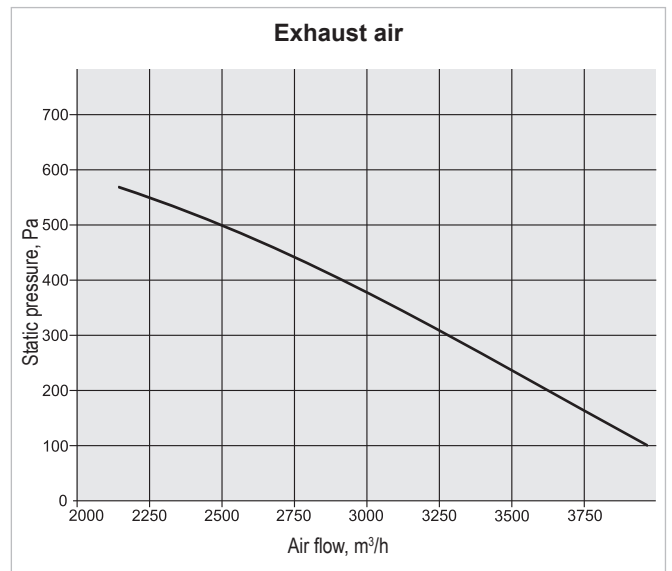
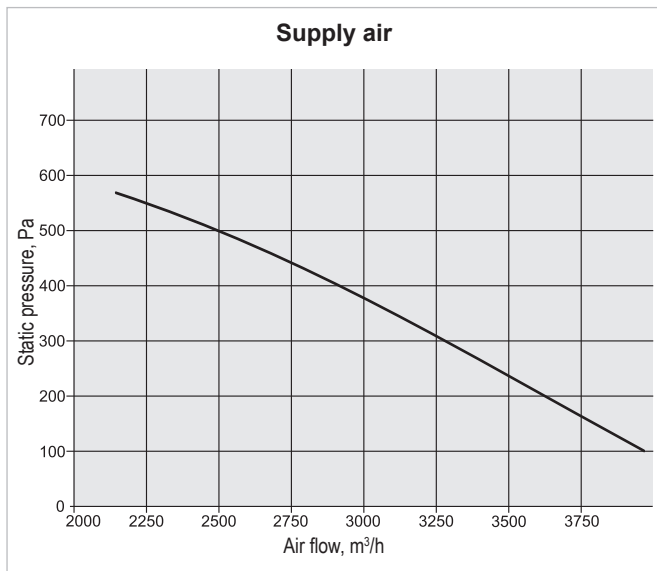
Electric Air Heater

Capacity	9		kW
Air temperature in/out	9,3/18,5		°C

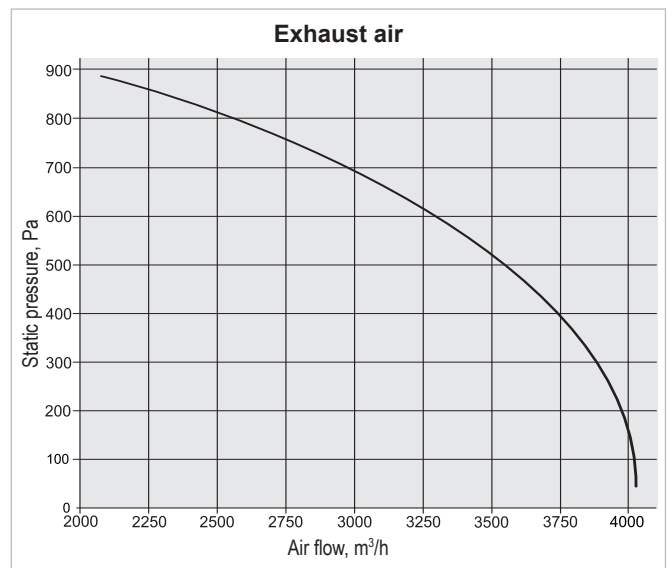
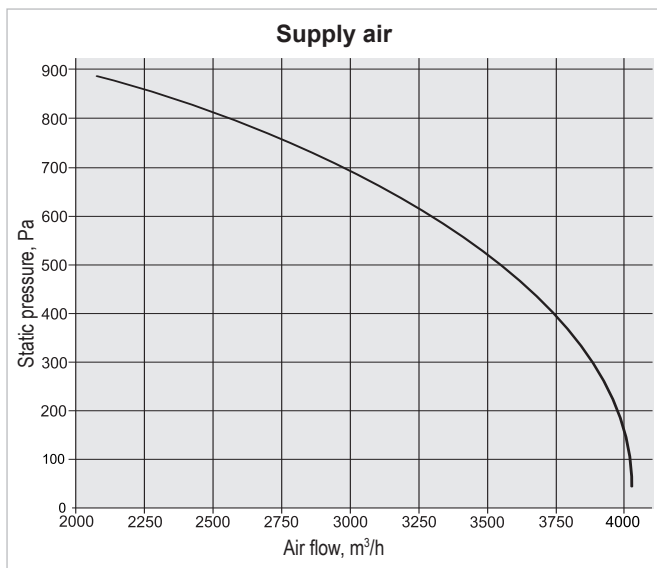
Parameters				Unit
Hot Water Air Heater				
Water temperature in/out	90/70	80/60	70/50	°C
Capacity	15,3	12,9	10,5	kW
Flow rate	673	565	458	dm ³ /h
Pressure drop	8	6	4	kPa
Connection	1/2			"
Air flow 3000 m ³ /h temperature in/out	9/24,1	9/21,8	9/20	°C



Performance REGO 3000VE-EC / REGO 3000VW-EC



Performance REGO 3000HE-AC / REGO 3000HW-AC



Correction factor for F7 class filter approximately – 70 Pa.