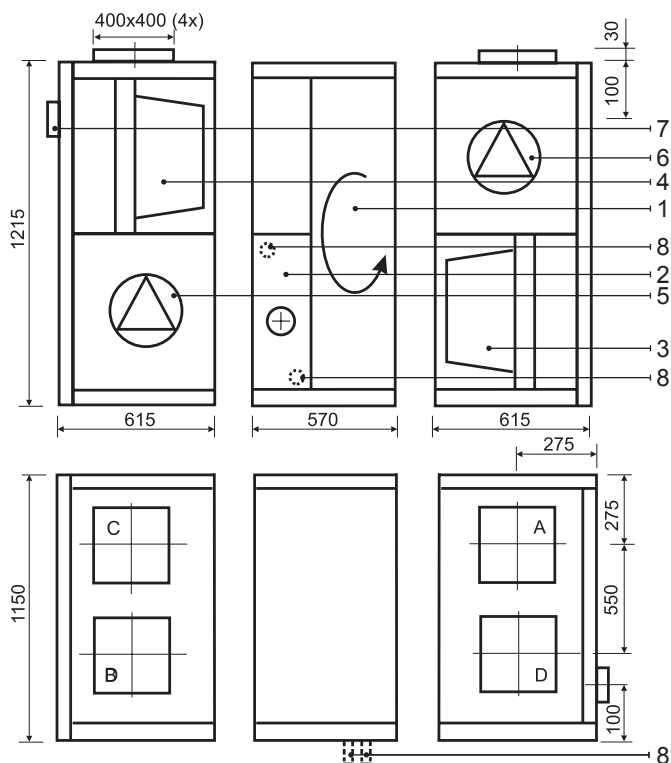


# KOMFOVENT KOMPAKT REGO 4000

## REGO 4000VE-EC / REGO 4000VW-EC



## Technical data

### REGO 4000VE-EC/VW-EC (vertical)

Panel thickness	45 mm
Unit weight	450 kg
Nominal air flow	4000 m <sup>3</sup> /h
Supply voltage	3~ 400/50 V/Hz
Maximal operating current	26/4,7 A
Control system	KOMFOVENT C3

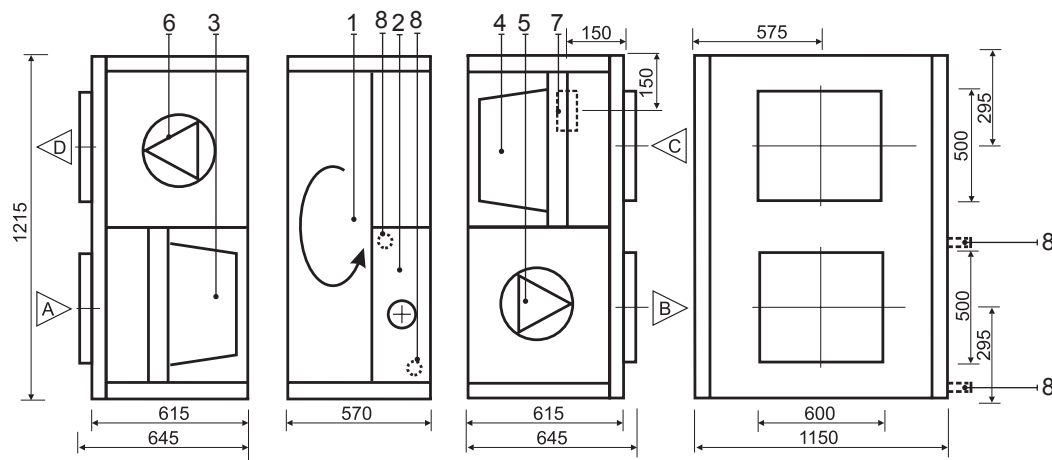
### REGO 4000HE-AC/HW-AC (horizontal)

Panel thickness	45 mm
Unit weight	450 kg
Nominal air flow	4000 m <sup>3</sup> /h
Supply voltage	3~ 400/50 V/Hz
Maximal operating current	31,7/10,5 A
Control system	KOMFOVENT C3

## Design:

1. Rotary heat exchanger
  2. Electric or hot water air heater
  3. Supply air filter
  4. Exhaust air filter
  5. Supply fan
  6. Exhaust fan
  7. Main switch
  8. Fluid connection tube
- A Outdoor intake  
B Supply air  
C Extract indoor  
D Exhaust air

## REGO 4000HE-AC / REGO 4000HW-AC



### Thermal Efficiency (4000 m<sup>3</sup>/h)

Parameters	Supply				Exhaust	Unit
<b>Intake</b>						
Temperature	-15	-10	-5	0	20	°C
Relative humidity	82	82	82	82	45	%
<b>Supply</b>						
Temperature	9,6	11,1	12,6	14,1		°C
Relative humidity	56	46	38	33		%

### Acoustic Data

	AC	EC	Unit
<b>Supply air flow (into air ducts)</b>			
Intake	76	62	LWA dB(A)
Supply	87	77	
<b>Exhaust air flow (into air ducts)</b>			
Intake	77	63	LWA dB(A)
Supply	87	77	
Surrounding	56	52	Lp3 dB(A)

Parameters	Supply	Exhaust	Unit
Nominal air flow	4000	4000	m <sup>3</sup> /h

### Air Filters

Filter class	F5	F5	
Type	Bag filter	Bag filter	
Dimensions b x h x l	892x490x300	892x490x300	mm

### Fans Motors

Type	AC/EC	AC/EC	
Input power	1500/996	1500/996	W
Rotation speed	2890/2200	2890/2200	rpm
Protection level	IP 55/44	IP 55/44	IEC 34-5

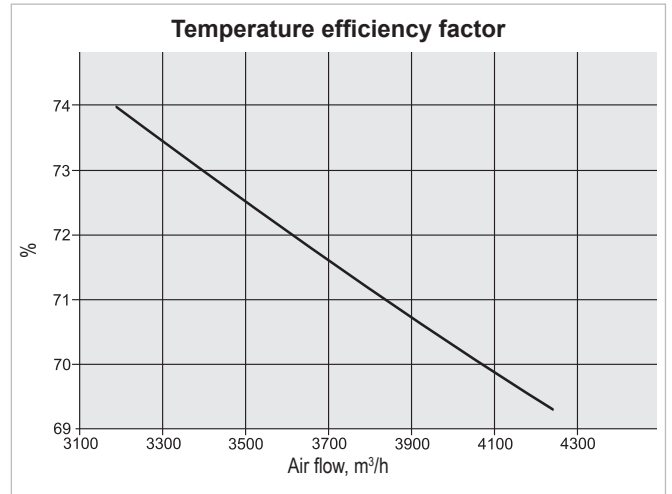
### Rotary Heat Exchanger

Thermal efficiency	70,3		%
Energy recovery	40,7		kW
Air temperature in/out	-23/7,2	20/-10,2	°C
Relative humidity in/out	82/74	40/98	%

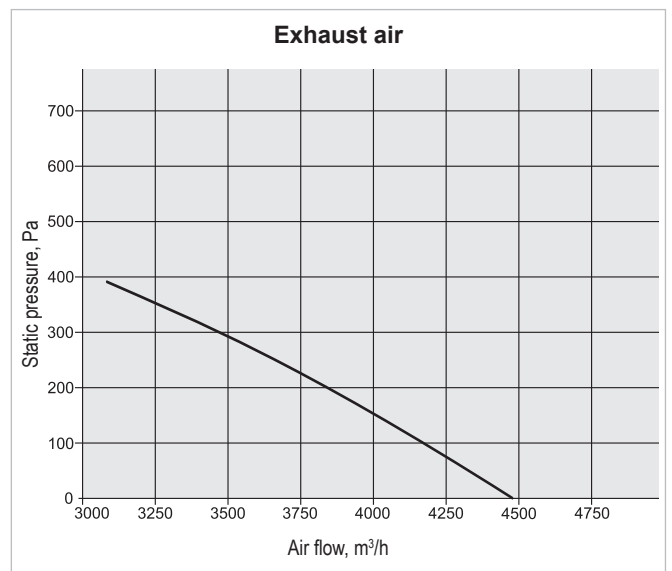
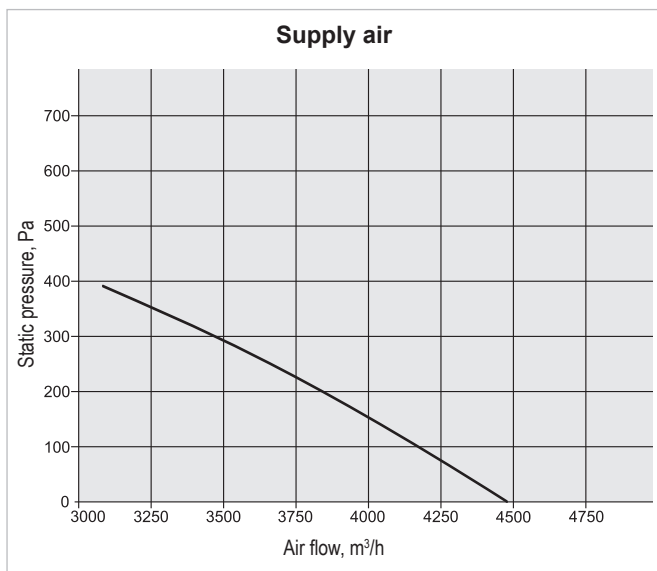
### Electric Air Heater

Capacity	15		kW
Air temperature in/out	7,2/18,6		°C

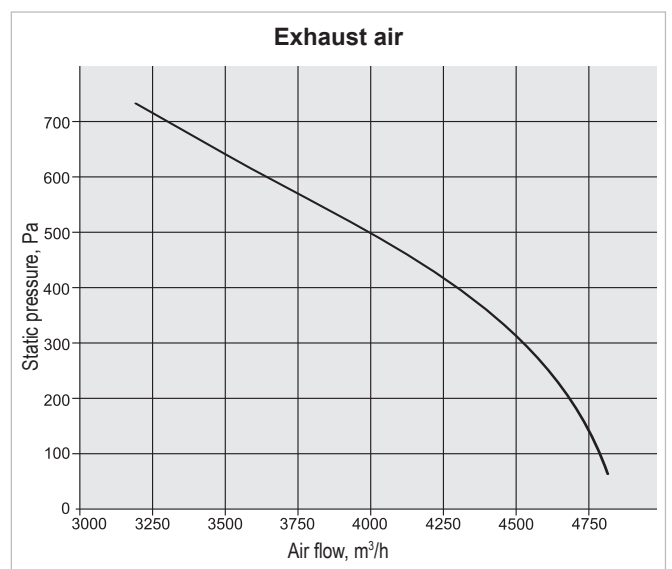
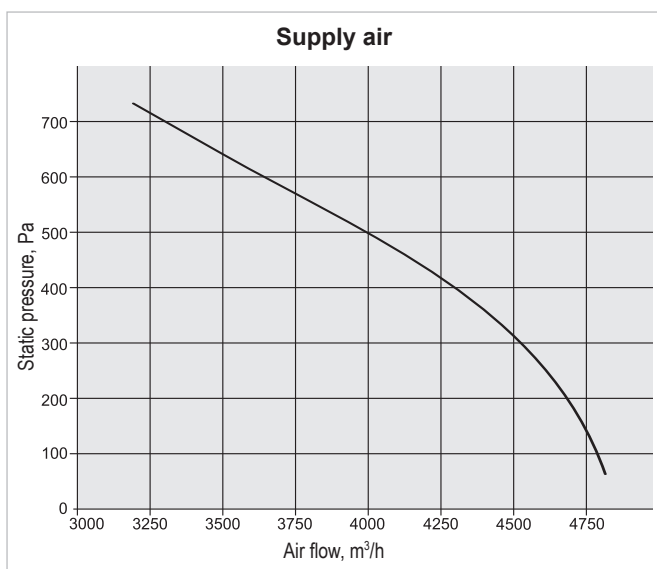
Parameters				Unit
<b>Hot Water Air Heater</b>				
Water temperature in/out	90/70	80/60	70/50	°C
Capacity	31,1	26,3	21,6	kW
Flow rate	1370	1156	944	dm <sup>3</sup> /h
Pressure drop	30	31	31	kPa
Connection	1			"
Air flow 4000 m <sup>3</sup> /h temperature in/out	7,2/30	7,2/26,6	7,2/23,1	°C



### Performance REGO 4000VE-EC / REGO 4000VW-EC



### Performance REGO 4000HE-AC / REGO 4000HW-AC



Correction factor for F7 class filter approximately – 70 Pa.