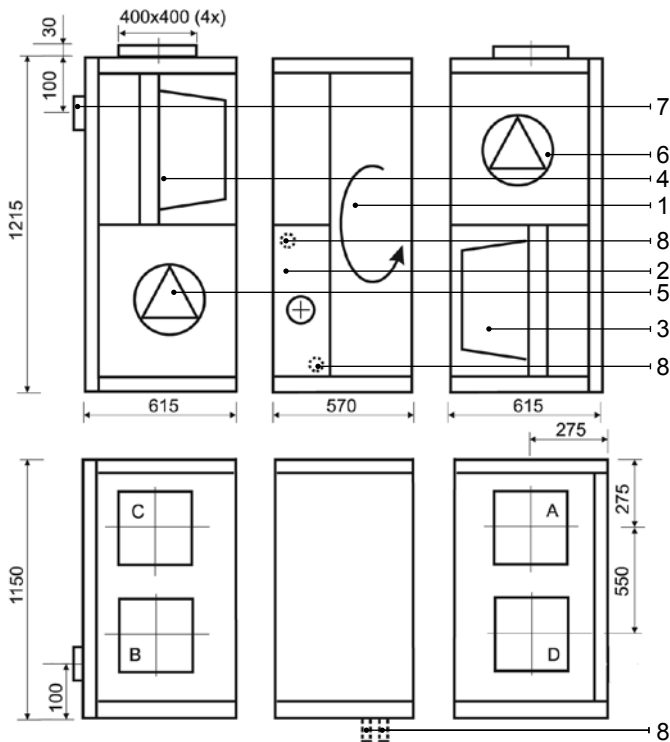
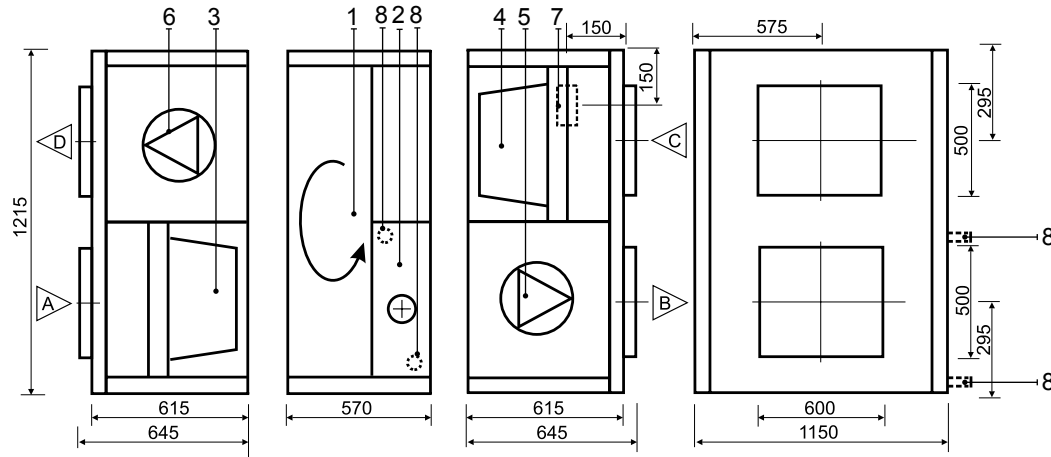


# KOMFOVENT KOMPAKT REGO 4500

## REGO 4500VE-EC / REGO 4500VW-EC (shown as left)



## REGO 4500HE-EC / REGO 4500HW-EC (shown as right)



## Technical data

### REGO 4500VE/VW-EC (vertical)

Panel thickness	45 mm
Unit weight	450 kg
Nominal air flow	4500 m <sup>3</sup> /h
Supply voltage	3~ 400/50 V/Hz
Maximal operating current	27,5/5,5 A
Control system	KOMFOVENT C3

### REGO 4500HE/HW-EC (horizontal)

Panel thickness	45 mm
Unit weight	450 kg
Nominal air flow	4500 m <sup>3</sup> /h
Supply voltage	3~ 400/50 V/Hz
Maximal operating current	27,5/5,5 A
Control system	KOMFOVENT C3

## Design:

1. Rotary heat exchanger
2. Electric or hot water air heater
3. Supply air filter
4. Exhaust air filter
5. Supply fan
6. Exhaust fan
7. Main switch
8. Fluid connection tube

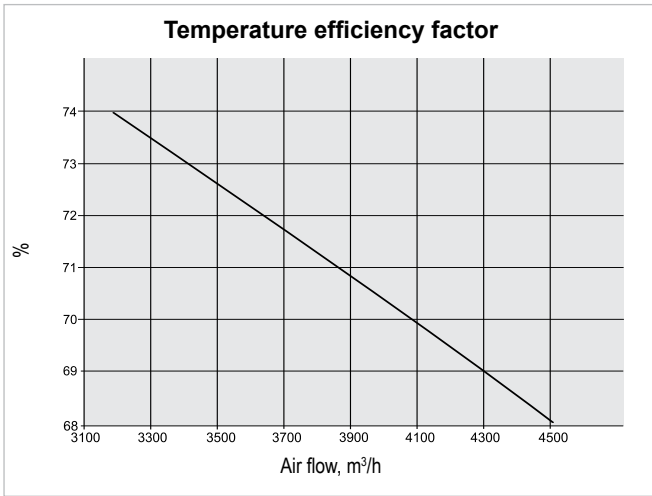
- A Outdoor intake
- B Supply air
- C Extract indoor
- D Exhaust air

Parameters	Supply	Exhaust	Unit
Nominal air flow	4500	4500	m <sup>3</sup> /h
<b>Air Filters</b>			
Filter class	F5	F5	
Type	Panel	Panel	
Dimensions b x h x l	892x490x300	892x490x300	mm
<b>Fans Motors</b>			
Type	EC	EC	
Input power	1700	1700	W
Rotation speed	2000	2000	rpm
Protection level	IP 54	IP 54	IEC 34-5
<b>Rotary Heat Exchanger</b>			
Thermal efficiency	68,2		%
Energy recovery	45,21		kW
Air temperature in/out	-23/6,3	20/-9,9	°C
Relative humidity in/out	82/75	40/98	%
<b>Electric Air Heater</b>			
Capacity	15		kW
Air temperature in/out	6,3/16,7		°C

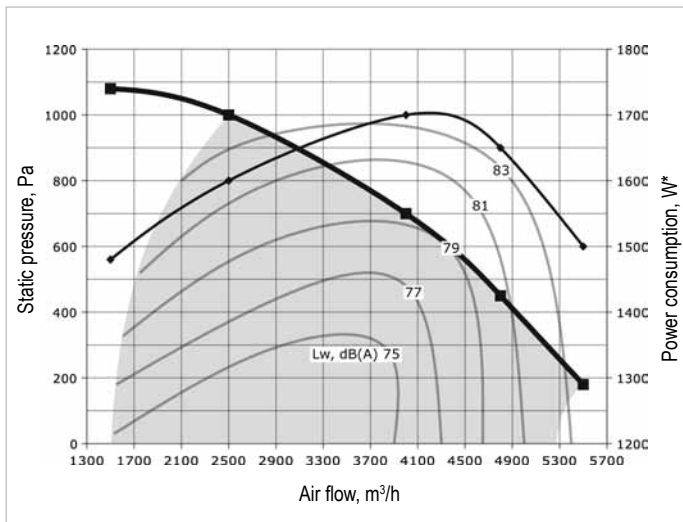
Parameters					Unit
<b>Hot Water Air Heater</b>					
Water temperature in/out	90/70	80/60	70/50	60/40	°C
Capacity	37,1	31,5	25,9	20,3	kW
Flow rate	1648	1391	1136	884	dm <sup>3</sup> /h
Pressure drop	12,5	9,5	7,5	5,8	kPa
Connection	1				"
Air flow 4500 m <sup>3</sup> /h temperature in/out	6,3/31	6,3/27	6,3/24	6,3/20	°C

### Thermal Efficiency (4500 m<sup>3</sup>/h)

Parameters	Supply				Exhaust	Unit
<b>Intake</b>						
Temperature	-15	-10	-5	0	20	°C
Relative humidity	82	82	82	82	45	%
<b>Supply</b>						
Temperature	8,9	10,5	12	13,6		°C
Relative humidity	58	48	40	35		%



**Performance REGO 4500VE/HE-EC / REGO 4500VW/HW-EC**



■ - air handling unit working zone.

\* - fans' one motor.

Correction factor for HW/VW approximately – 30 Pa at 4500m<sup>3</sup>/h.

Correction factor for F7 class filter approximately – 70 Pa at 4500m<sup>3</sup>/h.