

KOMFOVENT KOMPAKT RECU 1200

Technical data

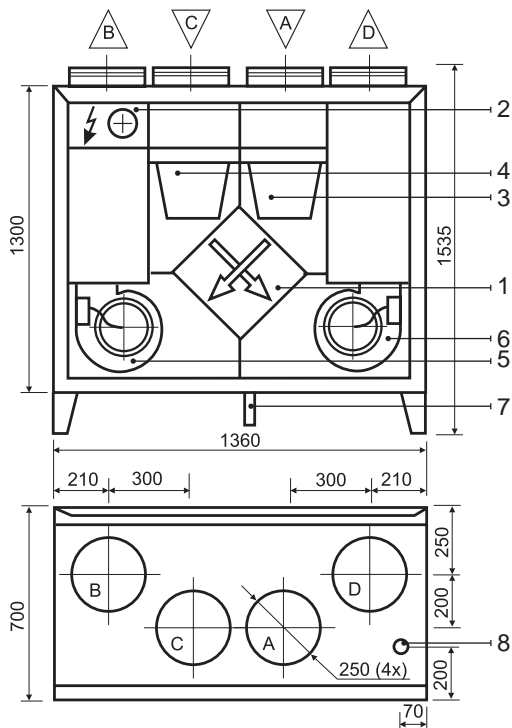
RECU 1200VE (vertical)

Panel thickness	45 mm
Unit weight	225 kg
Nominal air flow	1200 m ³ /h
Supply voltage	3~ 400/50 V/Hz
Maximal operating current	13,9 A
Control system	KOMFOVENT C2, C3

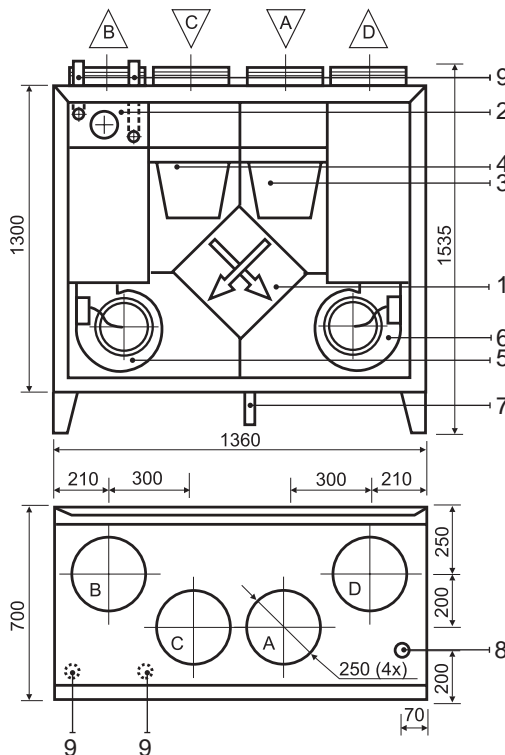
RECU 1200VW (vertical)

Panel thickness	45 mm
Unit weight	225 kg
Nominal air flow	1200 m ³ /h
Supply voltage	1~ 230/50 V/Hz
Maximal operating current	5,7 A
Control system	KOMFOVENT C2, C3

RECU 1200VE



RECU 1200VW



Design:

- | | |
|--|------------------|
| 1. Plate heat exchanger | A Outdoor intake |
| 2. Electric air heater | B Supply air |
| 3. Supply air filter | C Extract indoor |
| 4. Exhaust air filter | D Exhaust air |
| 5. Supply fan | |
| 6. Exhaust fan | |
| 7. Condensate drain (the water trap must be installed) | |
| 8. Connection of main cable | |
| 9. Fluid connection tube | |

Thermal Efficiency (1200 m³/h)

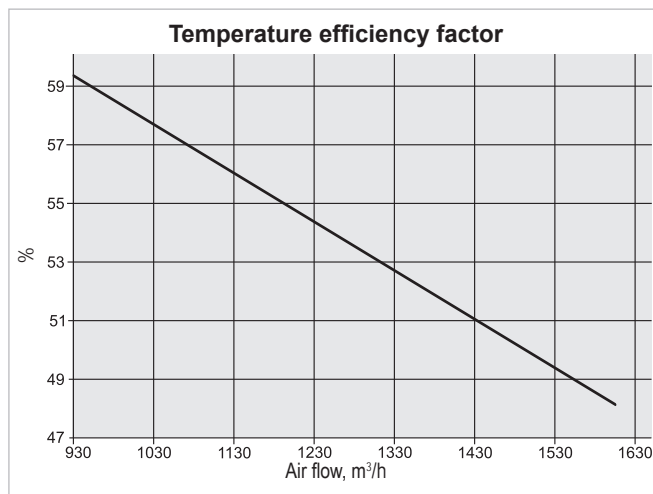
Parameters	Supply	Exhaust	Unit	
Intake				
Temperature	-5	0	20	°C
Relative humidity	82	82	45	%
Supply				
Temperature	8	9,9		°C
Relative humidity	32	41		%

Acoustic Data

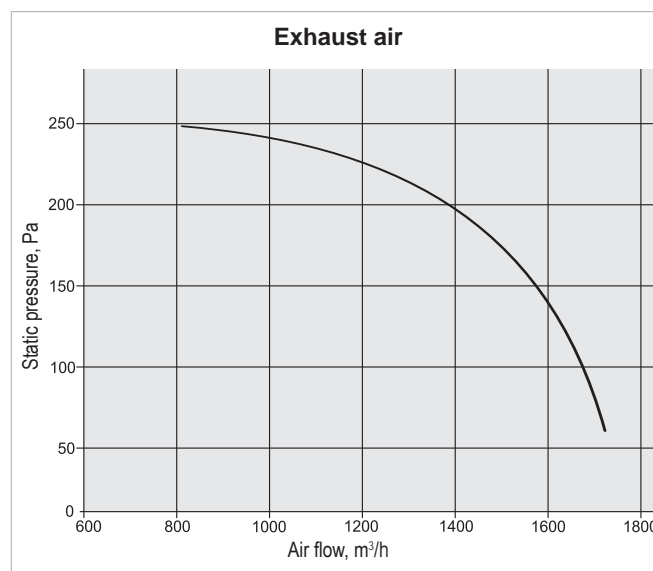
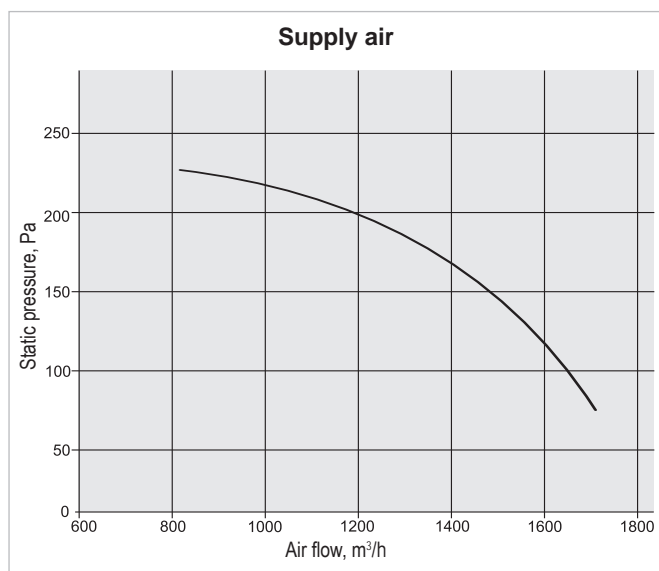
Speed	1	2	3	
Supply air flow (into air ducts)				Unit
Intake	43	46	50	Lwa dB(A)
Supply	52	55	60	
Exhaust air flow (into air ducts)				
Intake	45	49	52	Lwa dB(A)
Supply	53	56	60	
Surrounding	35	37	39	

Parameters	Supply	Exhaust	Unit
Nominal air flow	1200	1200	m ³ /h
Air Filters			
Filter class	F5	G4	
Type	Bag filter	Bag filter	
Dimensions b x h x l	592x287x360	592x287x360	mm
Fans Motors			
Input power	490	490	W
Rotation speed	1400	1400	rpm
Protection level	IP 55	IP 55	IEC 34-5
Plate Heat Exchanger			
Thermal efficiency	54		%
Energy recovery	6,7		kW
Air temperature in/out	-10/5,9	20/5,9	°C
Relative humidity in/out	82/25	45/100	%
Electric Air Heater			
Capacity	6		kW
Air temperature in/out	5,9/20,9		°C

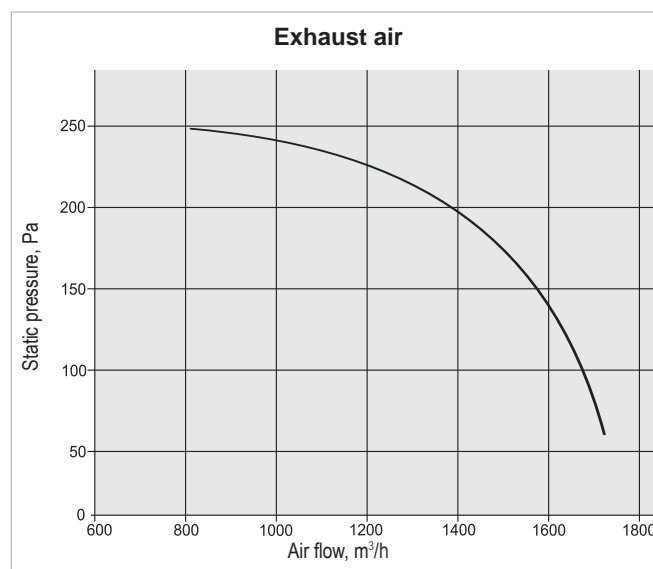
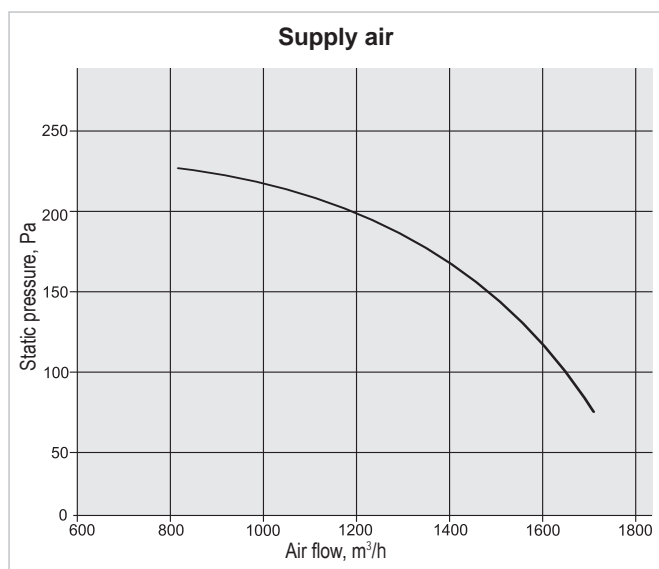
Parameters				Unit
Hot Water Air Heater				
Water temperature in/out	90/70	80/60	70/50	°C
Capacity	11,94	9,33	8,43	kW
Flow rate	530	409	370	dm ³ /h
Pressure drop	6,7	4	3,6	kPa
Connection	1/2			"
Air flow 1200 m ³ /h temperature in/out	5,9/35	5,9/29	5,9/27	°C



Performance RECU 1200VE



Performance RECU 1200VW



Correction factor for F7 class filter approximately – 70 Pa.

KOMFOVENT KOMPAKT RECU 1200

Technical data

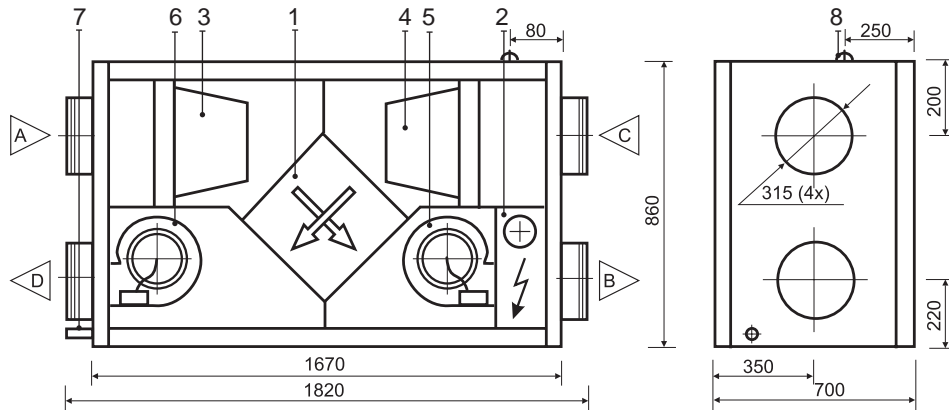
RECU 1200HE (horizontal)

Panel thickness	45 mm
Unit weight	195 kg
Nominal air flow	1200 m ³ /h
Supply voltage	3~ 400/50 V/Hz
Maximal operating current	13,9 A
Control system	KOMFOVENT C2, C3

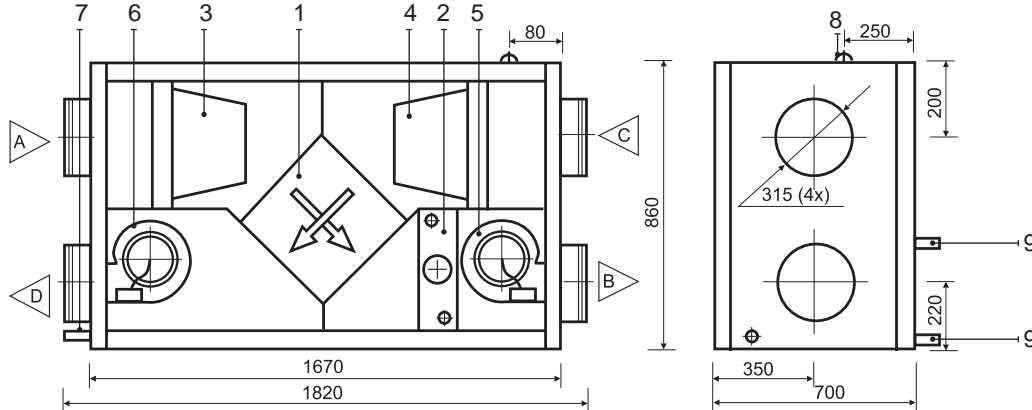
RECU 1200HW (horizontal)

Panel thickness	45 mm
Unit weight	200 kg
Nominal air flow	1200 m ³ /h
Supply voltage	1~ 230/50 V/Hz
Maximal operating current	5,7 A
Control system	KOMFOVENT C2, C3

RECU 1200HE



RECU 1200HW



- A Outdoor intake
- B Supply air
- C Extract indoor
- D Exhaust air

Design:

1. Plate heat exchanger
2. Electric or hot water air heater
3. Supply air filter
4. Exhaust air filter
5. Supply fan
6. Exhaust fan
7. Condensate drain (the water trap must be installed)
8. Connection of main cable
9. Fluid connection tube

Thermal Efficiency (1200 m³/h)

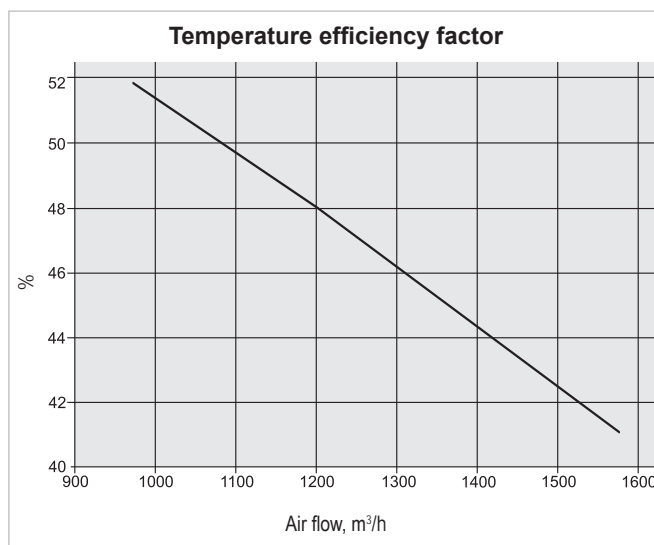
Parameters	Supply	Exhaust	Unit	
Intake				
Temperature	-5	0	20	°C
Relative humidity	82	82	45	%
Supply				
Temperature	8	9,9		°C
Relative humidity	32	41		%

Acoustic Data

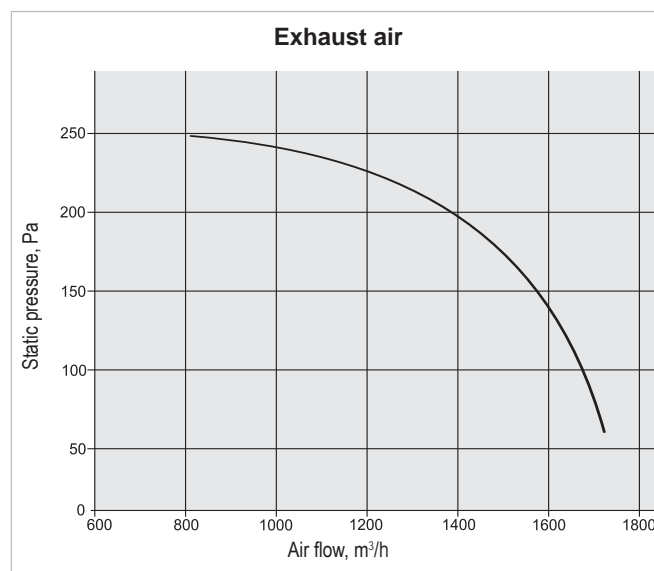
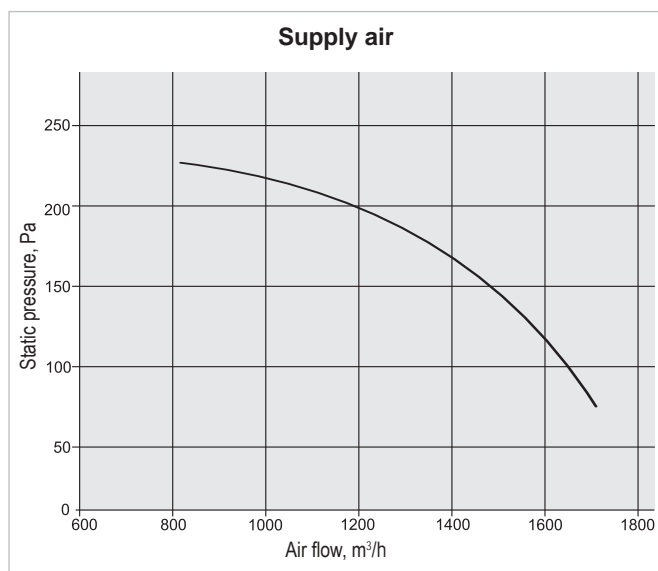
Speed	1	2	3	
Supply air flow (into air ducts)				Unit
Intake	43	46	50	LWA dB(A)
Supply	52	55	61	
Exhaust air flow (into air ducts)				
Intake	44	48	53	LWA dB(A)
Supply	52	55	61	
Surrounding	40	46	50	

Parameters	Supply	Exhaust	Unit
Nominal air flow	1200	1200	m ³ /h
Air Filters			
Filter class	F5	G4	
Type	Bag filter	Bag filter	
Dimensions bxxhxl	592x287x360	592x287x360	mm
Fans Motors			
Input power	490	490	W
Rotation speed	1480	1480	rpm
Protection level	IP 55	IP 55	IEC 34-5
Plate Heat Exchanger			
Thermal efficiency	48		%
Energy recovery	5,6		kW
Air temperature in/out	-10/4,2	20/6,9	°C
Relative humidity in/out	82/28	45/100	%
Electric Air Heater			
Capacity	6		kW
Air temperature in/out	5,9/20,9		°C

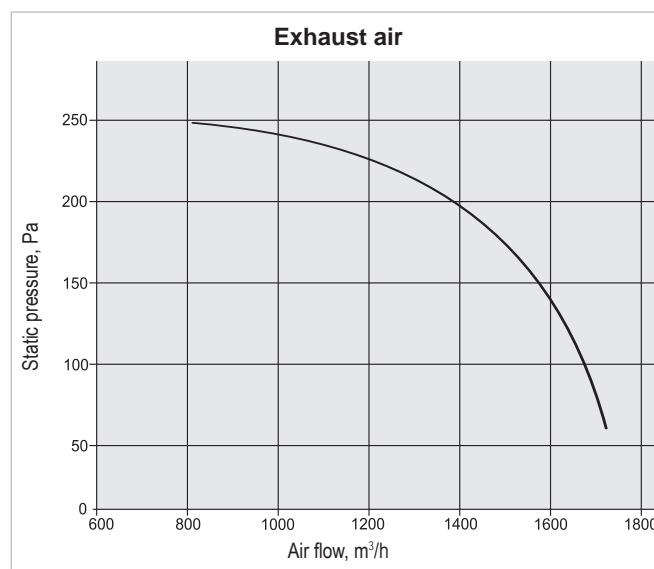
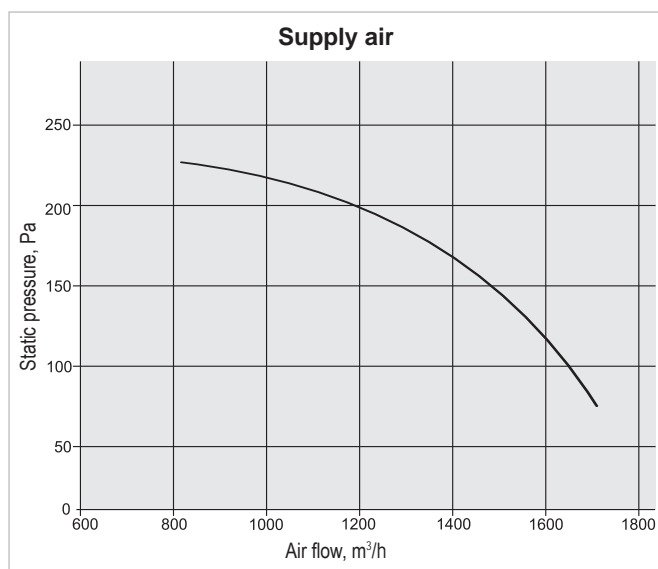
Parameters				Unit
Hot Water Air Heater				
Water temperature in/out	90/70	80/60	70/50	°C
Capacity	11	9,3	7,7	kW
Flow rate	482	409	336	dm ³ /h
Pressure drop	5	4	3	kPa
Connection	1/2			"
Air flow 1200 m ³ /h temperature in/out	4,2/31	4,2/27	4,2/23	°C



Performance RECU 1200HE



Performance RECU 1200HW



Correction factor for F7 class filter approximately – 70 Pa.