

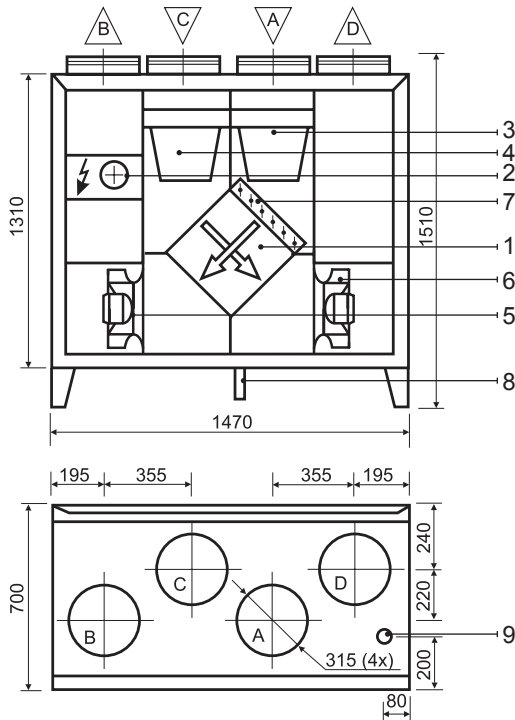
# KOMFOVENT KOMPAKT RECU 1600

## Technical data

### RECU 1600VE-EC (vertical)

Panel thickness	45 mm
Unit weight	300 kg
Nominal air flow	1600 m <sup>3</sup> /h
Supply voltage	3~ 400/50 V/Hz
Maximal operating current	23,4 A
Control system	KOMFOVENT C3

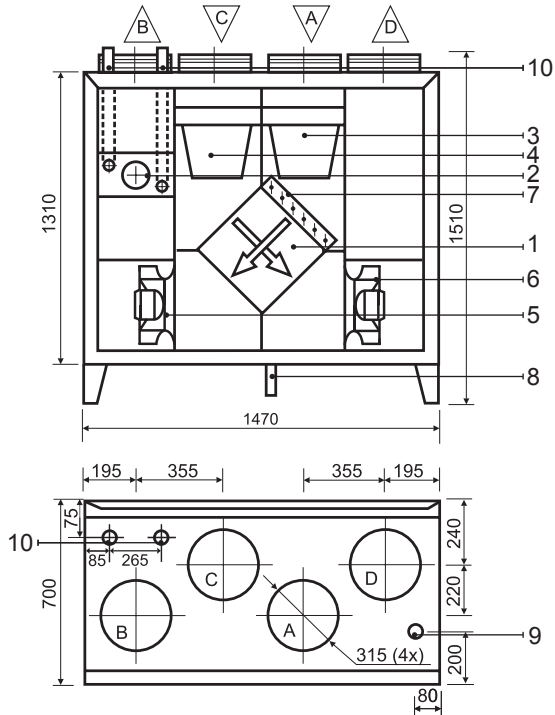
### RECU 1600VE-EC (shown as left)



### RECU 1600VW-EC (vertical)

Panel thickness	45 mm
Unit weight	290 kg
Nominal air flow	1600 m <sup>3</sup> /h
Supply voltage	1~ 230/50 V/Hz
Maximal operating current	6,3 A
Control system	KOMFOVENT C3

### RECU 1600VW-EC (shown as left)



## Design:

1. Plate heat exchanger
2. Electric or hot water air heater
3. Supply air filter
4. Exhaust air filter
5. Supply fan
6. Exhaust fan
7. Air by-pass damper
8. Condensate drain (the water trap must be installed D=28 mm)
9. Connection of main cable
10. Fluid connection tube

- A Outdoor intake  
 B Supply air  
 C Extract indoor  
 D Exhaust air

### Thermal Efficiency (1600 m<sup>3</sup>/h)

Parameters	Supply	Exhaust	Unit	
<b>Intake</b>				
Temperature	-5	0	20	°C
Relative humidity	82	82	45	%
<b>Supply</b>				
Temperature	9,4	11		°C
Relative humidity	28	38		%

Parameters	Supply	Exhaust	Unit
Nominal air flow	1600	1600	m <sup>3</sup> /h

### Air Filters

Filter class	F5	G4	
Type	Bag filter	Bag filter	
Dimensions b x h x l	592x287x360	592x287x360	mm

### Fans Motors

Type	EC	EC	
Input power	455	455	W
Rotation speed	2600	2600	rpm
Protection level	IP 54	IP 54	IEC 34-5

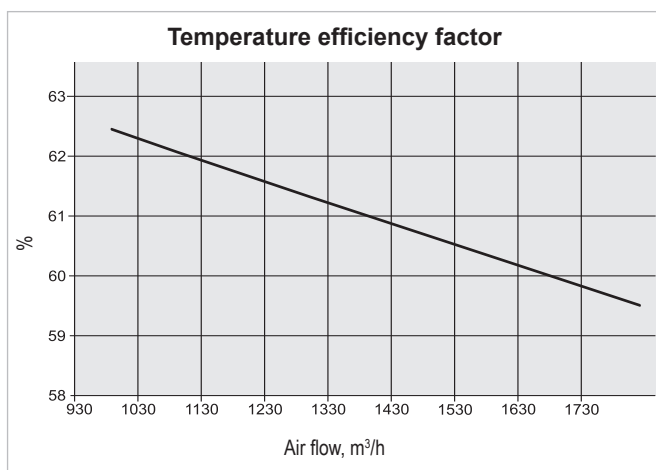
### Plate Heat Exchanger

Thermal efficiency	60,3		%
Energy recovery	9,7		kW
Air temperature in/out	-10/8,1	20/5,2	°C
Relative humidity in/out	82/20	45/95	%

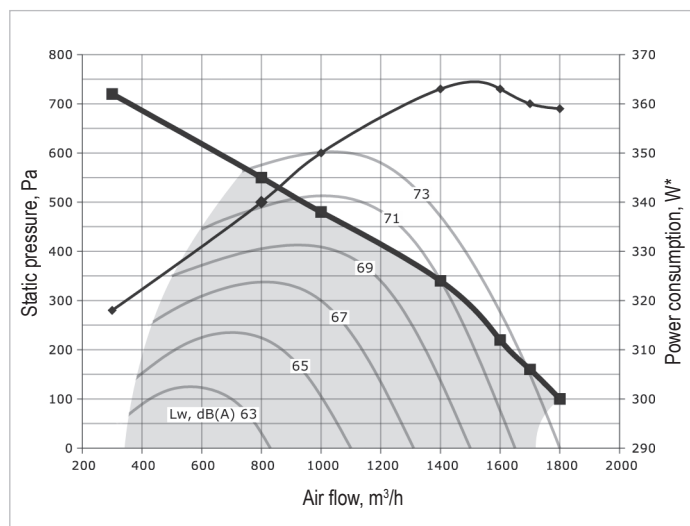
### Electric Air Heater

Capacity	12		kW
Air temperature in/out	-2,8/20		°C

Parameters				Unit
<b>Hot Water Air Heater</b>				
Water temperature in/out	90/70	80/60	70/50	°C
Capacity	25,4	21,6	19,5	kW
Flow rate	1121	946	851	dm <sup>3</sup> /h
Pressure drop	5	4	2	kPa
Connection	1			"
Air flow 1600 m <sup>3</sup> /h temperature in/out	-20/27,1	-20/20	-20/16,2	°C



### Performance RECU 1600VE-EC / RECU 1600VW-EC



■ - air handling unit working zone.

\* - fans' one motor.

Correction factor for HW/VW approximately – 30 Pa at 1600m<sup>3</sup>/h.

Correction factor for F7 class filter approximately – 70 Pa at 1600m<sup>3</sup>/h.