

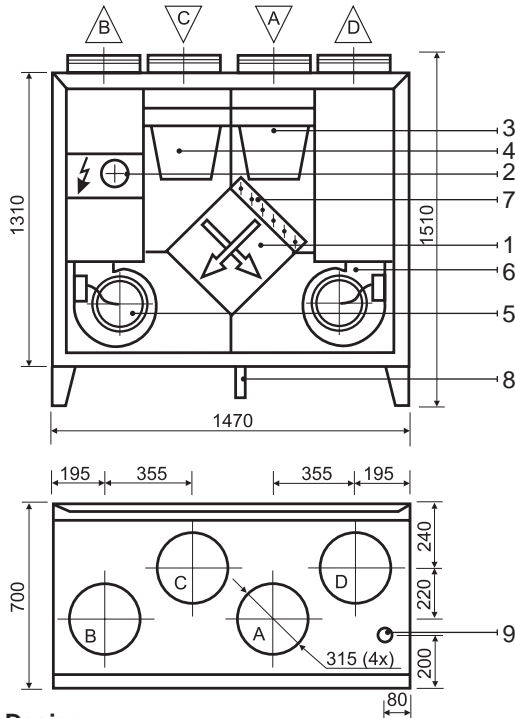
KOMFOVENT KOMPAKT RECU 1600

Technical data

RECU 1600VE (vertical)

Panel thickness	45 mm
Unit weight	300 kg
Nominal air flow	1600 m ³ /h
Supply voltage	3~ 400/50 V/Hz
Maximal operating current	26,6 A
Control system	KOMFOVENT C2, C3

RECU 1600VE



Design:

1. Plate heat exchanger
2. Electric or hot water air heater
3. Supply air filter
4. Exhaust air filter
5. Supply fan
6. Exhaust fan
7. Air by-pass damper
8. Condensate drain (the water trap must be installed)
9. Connection of main cable
10. Fluid connection tube

Thermal Efficiency (1600 m³/h)

Parameters	Supply	Exhaust	Unit
Intake			
Temperature	-5	0	20
Relative humidity	82	82	45
Supply			
Temperature	9,4	11	
Relative humidity	28	38	

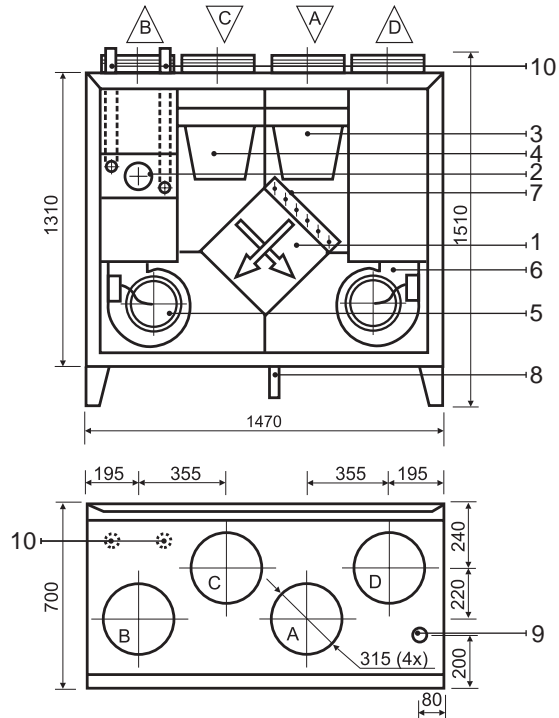
Acoustic Data

Speed	1	2	3	
Supply air flow (into air ducts)				Unit
Intake	43	47	53	Lwa dB(A)
Supply	53	58	65	
Exhaust air flow (into air ducts)				
Intake	45	52	54	Lwa dB(A)
Supply	53	58	65	
Surrounding	36	38	42	Lp3 dB(A)

RECU 1600VW (vertical)

Panel thickness	45 mm
Unit weight	290 kg
Nominal air flow	1600 m ³ /h
Supply voltage	1~ 230/50 V/Hz
Maximal operating current	9,7 A
Control system	KOMFOVENT C2, C3

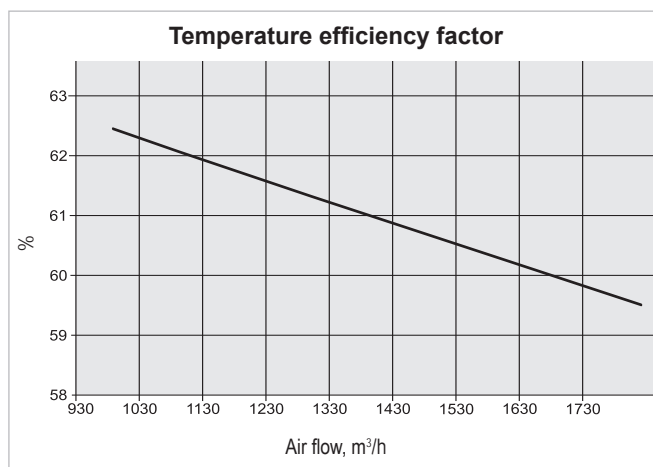
RECU 1600VW



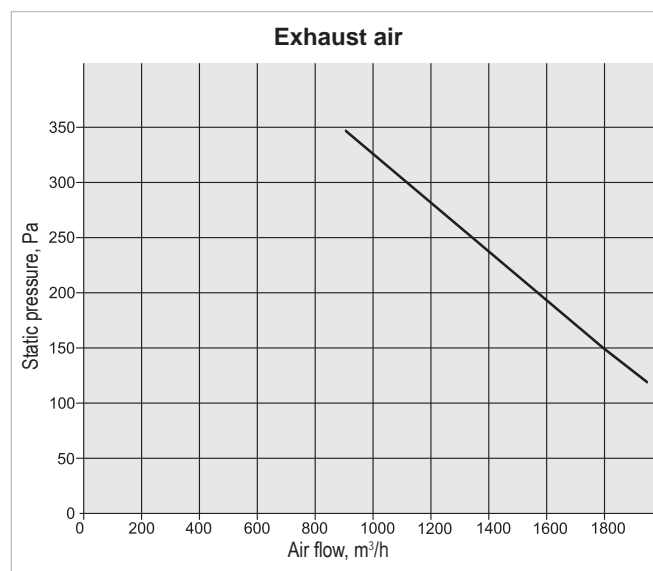
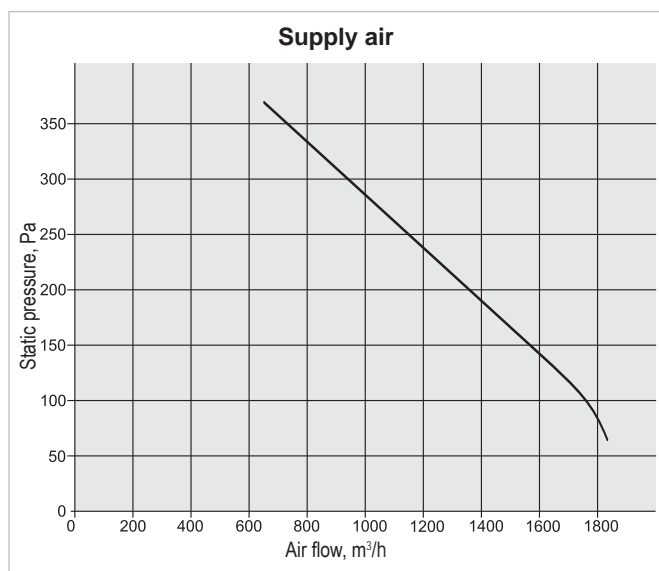
- A Outdoor intake
- B Supply air
- C Extract indoor
- D Exhaust air

Parameters	Supply	Exhaust	Unit
Nominal air flow	1600	1600	m ³ /h
Air Filters			
Filter class	F5	G4	
Type	Bag filter	Bag filter	
Dimensions b x h x l	592x287x360	592x287x360	mm
Fans Motors			
Input power	650	650	W
Rotation speed	1480	1480	rpm
Protection level	IP 55	IP 55	IEC 34-5
Plate Heat Exchanger			
Thermal efficiency	60,3		%
Energy recovery	9,7		kW
Air temperature in/out	-10/8,1	20/5,2	°C
Relative humidity in/out	82/20	45/95	%
Electric Air Heater			
Capacity	12		kW
Air temperature in/out	-2,8/20		°C

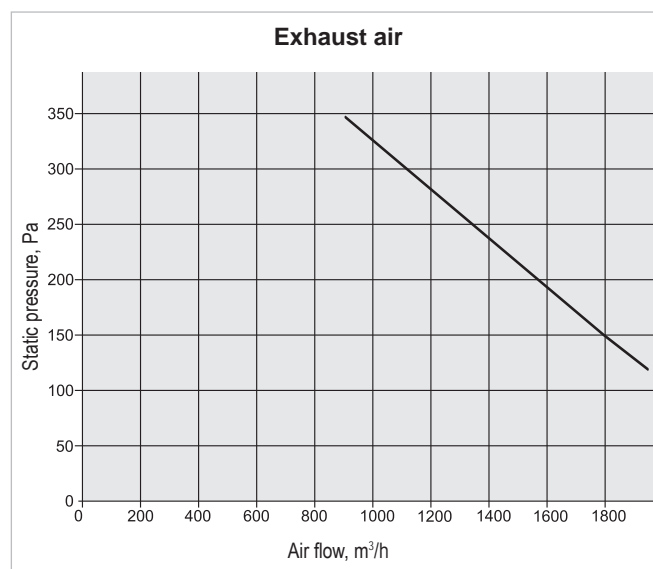
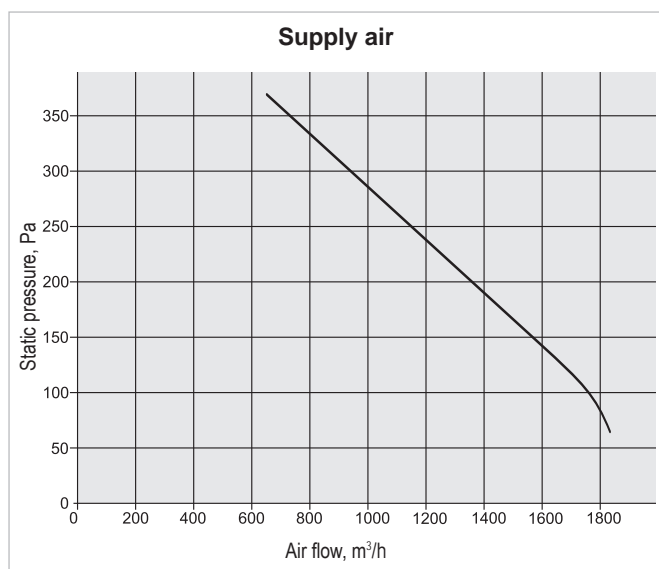
Parameters				Unit
Hot Water Air Heater				
Water temperature in/out	90/70	80/60	70/50	°C
Capacity	25,4	21,6	19,5	kW
Flow rate	1121	946	851	dm ³ /h
Pressure drop	5	4	2	kPa
Connection	1			"
Air flow 1600 m ³ /h temperature in/out	-20/27,1	-20/20	-20/16,2	°C



Performance RECU 1600VE



Performance RECU 1600VW



Correction factor for F7 class filter approximately – 70 Pa.

KOMFOVENT KOMPAKT RECU 1600

Technical data

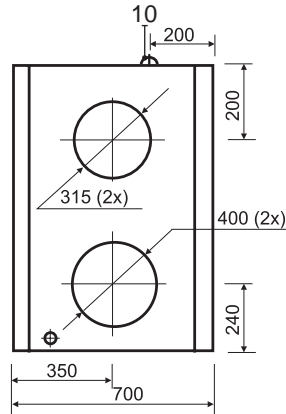
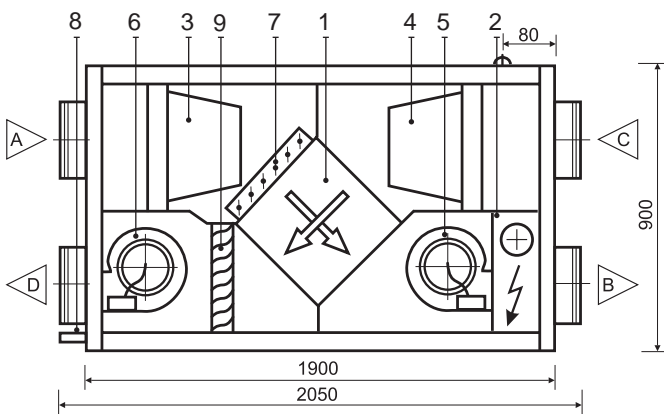
RECU 1600HE (horizontal)

Panel thickness	45 mm
Unit weight	320 kg
Nominal air flow	1600 m ³ /h
Supply voltage	3~ 400/50 V/Hz
Maximal operating current	26,6 A
Control system	KOMFOVENT C2, C3

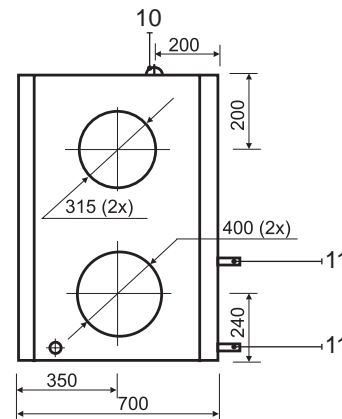
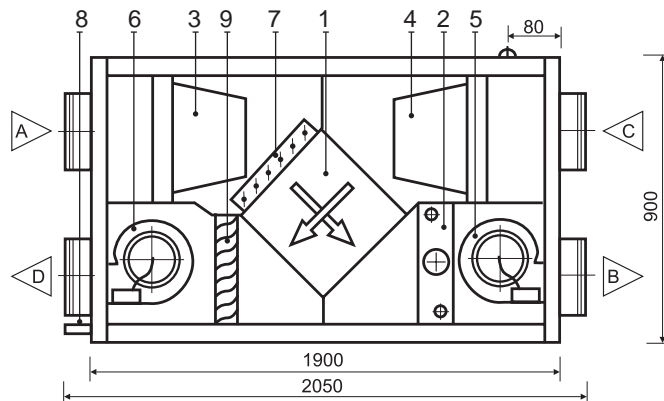
RECU 1600HW (horizontal)

Panel thickness	45 mm
Unit weight	330 kg
Nominal air flow	1600 m ³ /h
Supply voltage	1~ 230/50 V/Hz
Maximal operating current	9,7 A
Control system	KOMFOVENT C2, C3

RECU 1600HE



RECU 1600HW



- A Outdoor intake
- B Supply air
- C Extract indoor
- D Exhaust air

Design:

- 1. Plate heat exchanger
- 2. Electric or hot water air heater
- 3. Supply air filter
- 4. Exhaust air filter
- 5. Supply fan
- 6. Exhaust fan
- 7. Air by-pass damper
- 8. Condensate drain (the water trap must be installed)
- 9. Drop eliminator
- 10. Connection of main cable
- 11. Fluid connection tube

Thermal Efficiency (1600 m³/h)

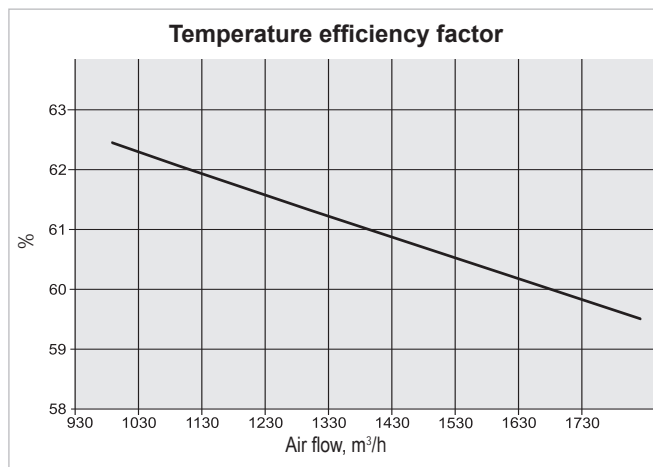
Parameters	Supply	Exhaust	Unit
Intake			
Temperature	-5	0	20
Relative humidity	82	82	45
Supply			
Temperature	9,4	11	
Relative humidity	28	38	

Acoustic Data

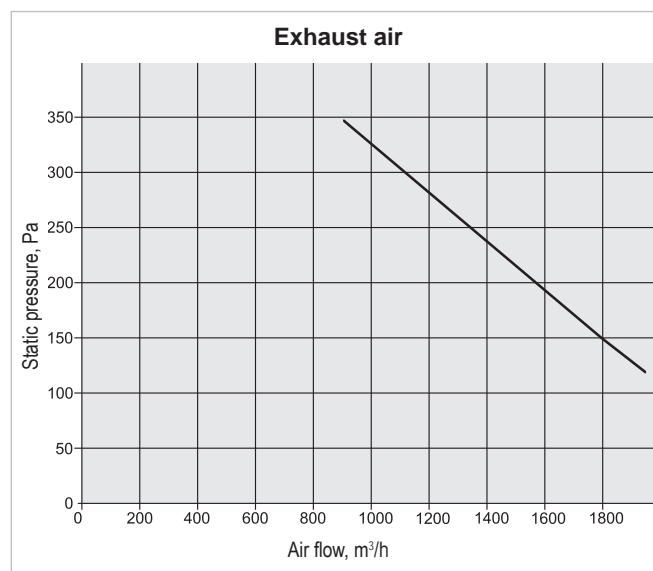
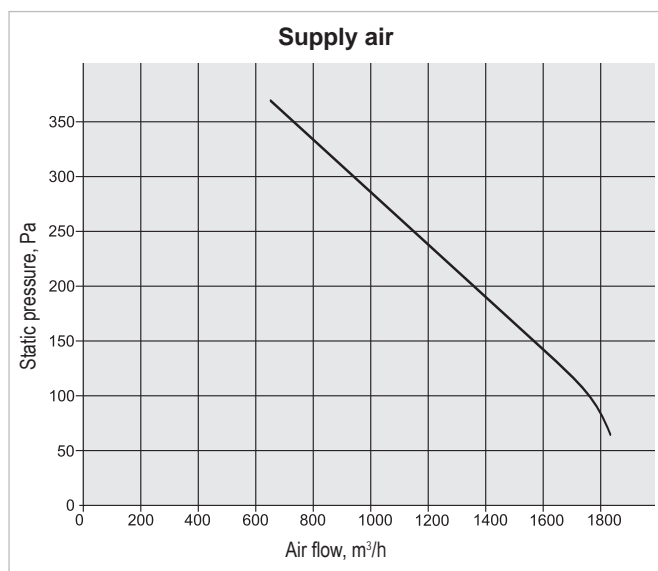
Speed	1	2	3	Unit
Supply air flow (into air ducts)				
Intake	43	47	56	Lwa dB(A)
Supply	53	58	65	
Exhaust air flow (into air ducts)				
Intake	45	52	57	Lwa dB(A)
Supply	53	58	65	
Surrounding	37	39	42	

Parameters	Supply	Exhaust	Unit
Nominal air flow	1600	1600	m ³ /h
Air Filters			
Filter class	F5	G4	
Type	Bag filter	Bag filter	
Dimensions bxxhxl	592x287x360	592x287x360	mm
Fans Motors			
Input power	650	650	W
Rotation speed	1480	1480	rpm
Protection level	IP 55	IP 55	IEC 34-5
Plate Heat Exchanger			
Thermal efficiency	60,3		%
Energy recovery	9,7		kW
Air temperature in/out	-10/8,1	20/5,2	°C
Relative humidity in/out	82/20	45/95	%
Electric Air Heater			
Capacity	12		kW
Air temperature in/out	-2,8/20		°C

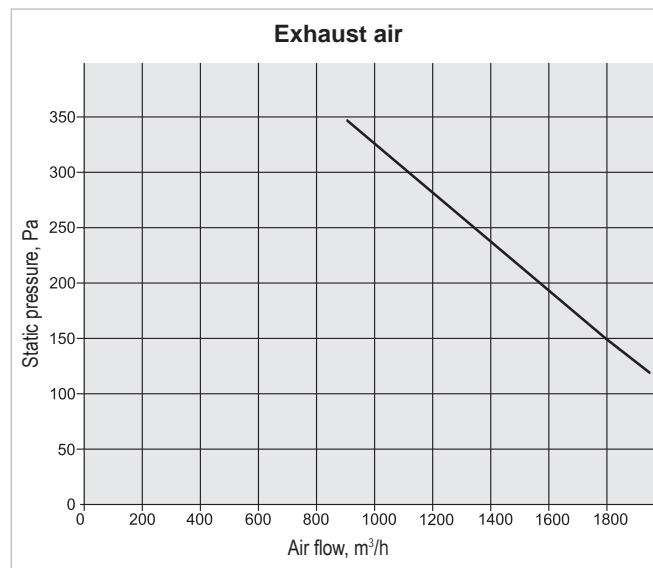
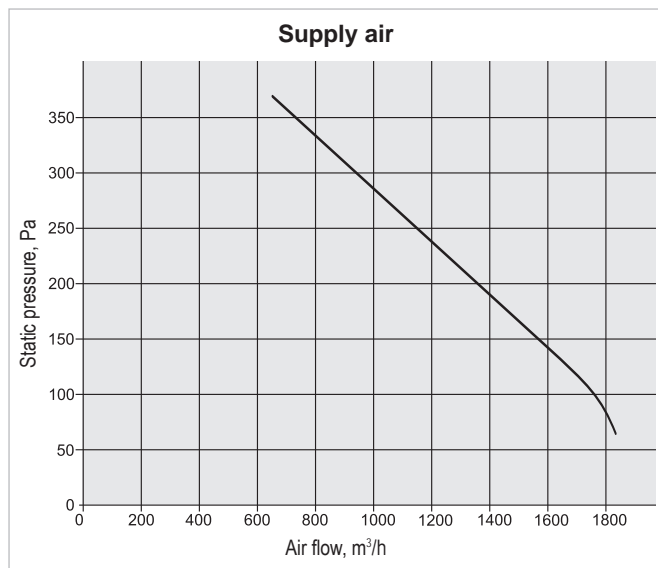
Parameters				Unit
Hot Water Air Heater				
Water temperature in/out	90/70	80/60	70/50	°C
Capacity	25	23,2	18,3	kW
Flow rate	1140	1015	798	dm ³ /h
Pressure drop	5	4	2	kPa
Connection	1			"
Air flow 1600 m ³ /h temperature in/out	-23/25	-23/20	-14/20	°C



Performance RECU 1600HE



Performance RECU 1600HW



Correction factor for F7 class filter approximately – 70 Pa.