

KOMFOVENT KOMPAKT RECU 2000

Technical data

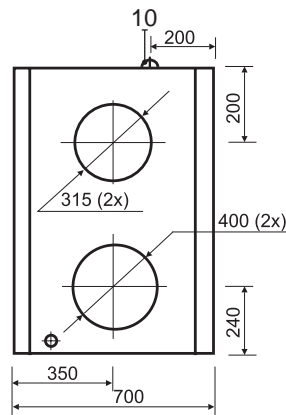
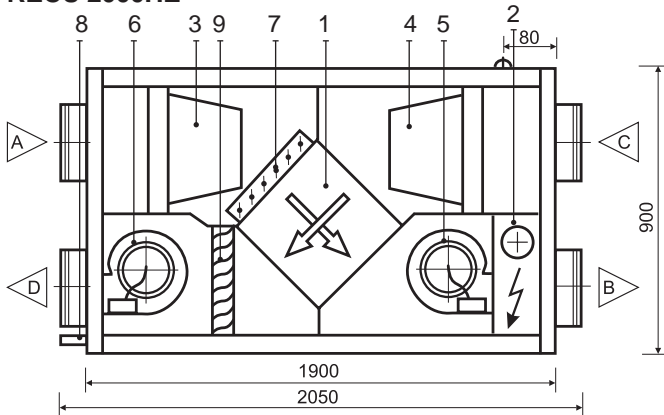
RECU 2000HE (horizontal)

Panel thickness	45 mm
Unit weight	325 kg
Nominal air flow	2000 m ³ /h
Supply voltage	3~ 400/50 V/Hz
Maximal operating current	38,8 A
Control system	KOMFOVENT C2, C3

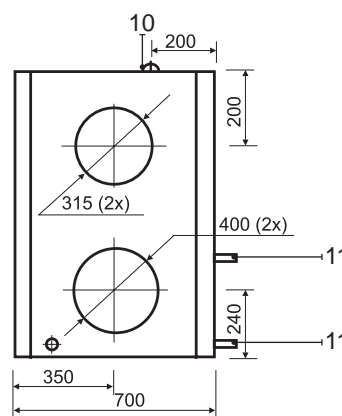
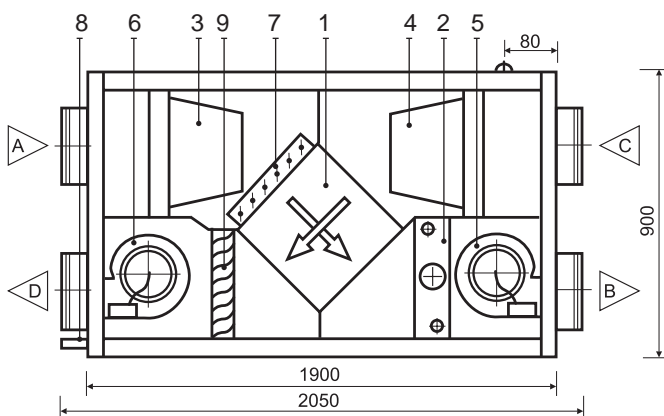
RECU 2000HW (horizontal)

Panel thickness	45 mm
Unit weight	330 kg
Nominal air flow	2000 m ³ /h
Supply voltage	1~ 230/50 V/Hz
Maximal operating current	13,3 A
Control system	KOMFOVENT C2, C3

RECU 2000HE



RECU 2000HW



- A Outdoor intake
- B Supply air
- C Extract indoor
- D Exhaust air

Design:

- 1. Plate heat exchanger
- 2. Electric or hot water air heater
- 3. Supply air filter
- 4. Exhaust air filter
- 5. Supply fan
- 6. Exhaust fan
- 7. Air by-pass damper
- 8. Condensate drain (the water trap must be installed)
- 9. Drop eliminator
- 10. Connection of main cable
- 11. Fluid connection tube

Thermal Efficiency (2000 m³/h)

Parameters	Supply		Exhaust	Unit
Intake				
Temperature	-5	0	20	°C
Relative humidity	82	82	45	%
Supply				
Temperature	7,3	9,5		°C
Relative humidity	32	42		%

Acoustic Data

Speed	1	2	3	
Supply air flow (into air ducts)				
Intake	43	47	57	Lwa dB(A)
Supply	53	58	65	
Exhaust air flow (into air ducts)				
Intake	45	52	57	Lwa dB(A)
Supply	53	58	65	
Surrounding	39	41	43	

Parameters	Supply	Exhaust	Unit
Nominal air flow	2000	2000	m ³ /h

Air Filters

Filter class	F5	G4	
Type	Bag filter	Bag filter	
Dimensions b x h x l	592x287x360	592x287x360	mm

Fans Motors

Input power	830	830	W
Rotation speed	1480	1480	rpm
Protection level	IP 55	IP 55	IEC 34-5

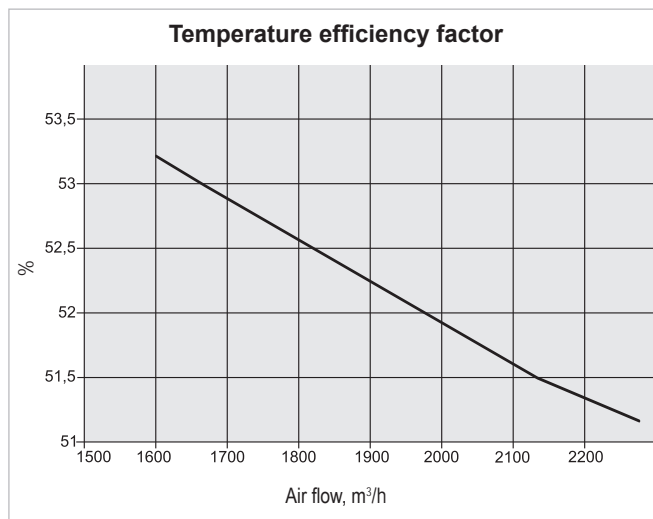
Plate Heat Exchanger

Thermal efficiency	51,9		%
Energy recovery	10,4		kW
Air temperature in/out	-10/5,6	20/6,9	°C
Relative humidity in/out	82/23	45/90	%

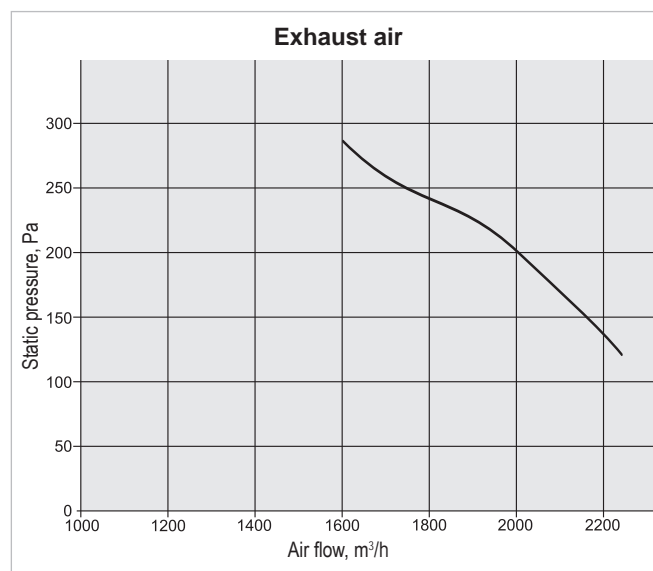
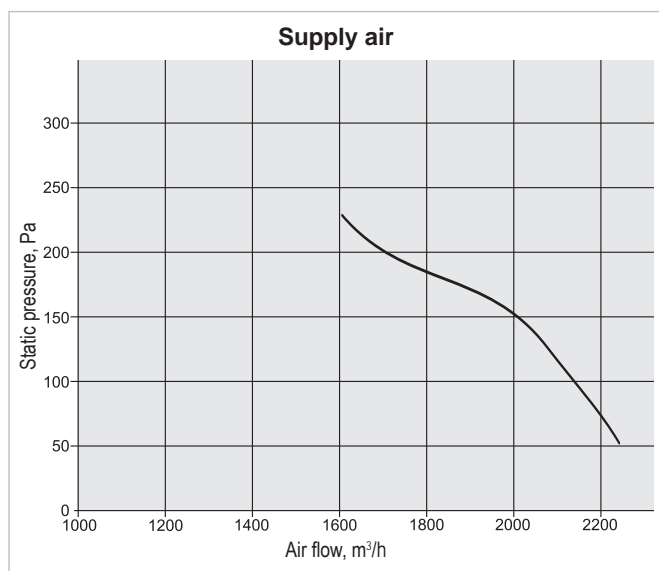
Electric Air Heater

Capacity	18		kW
Air temperature in/out	-7/20		°C

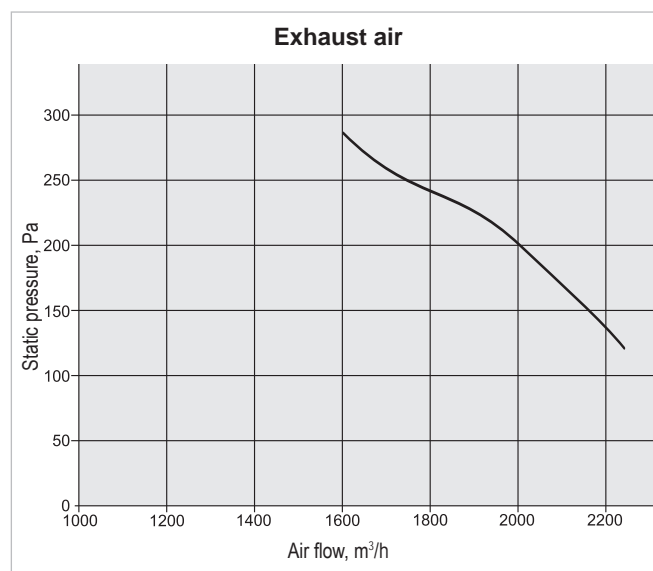
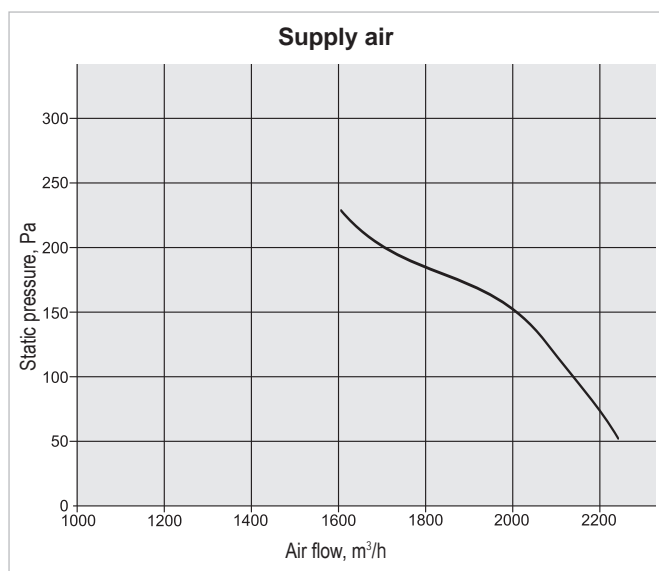
Parameters				Unit
Hot Water Air Heater				
Water temperature in/out	90/70	80/60	70/50	°C
Capacity	29,7	25,2	18,9	kW
Flow rate	1308	1094	825	dm ³ /h
Pressure drop	6	4	3	kPa
Connection	1			"
Air flow 2000 m ³ /h temperature in/out	-23/21	-17/20	-8/20	°C



Performance RECU 2000HE



Performance RECU 2000HW



Correction factor for F7 class filter approximately – 70 Pa.