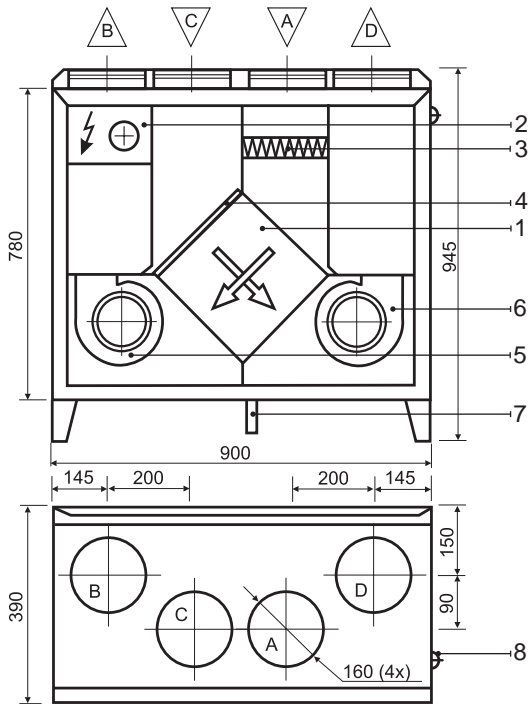


# KOMFOVENT KOMPAKT RECU 400

## RECU 400VE



## Technical data

### RECU 400VE (vertical)

Panel thickness	45 mm
Unit weight	62 kg
Nominal air flow	400 m <sup>3</sup> /h
Supply voltage	1~ 230/50 V/Hz
Maximal operating current	13 A
Control system	KOMFOVENT C2, C3

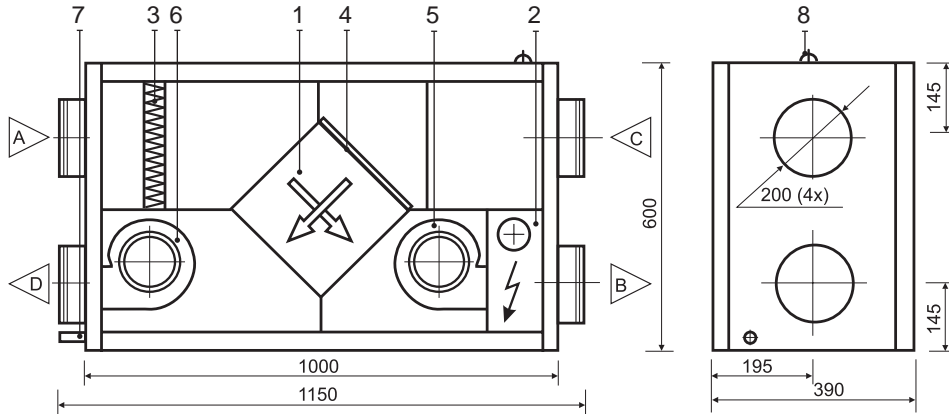
### RECU 400HE (horizontal)

Panel thickness	45 mm
Unit weight	55 kg
Nominal air flow	400 m <sup>3</sup> /h
Supply voltage	1~ 230/50 V/Hz
Maximal operating current	13 A
Control system	KOMFOVENT C2, C3

### Design:

- |  |                  |
|--|------------------|
| 1. Plate heat exchanger                                | A Outdoor intake |
| 2. Electric air heater                                 | B Supply air     |
| 3. Supply air filter                                   | C Extract indoor |
| 4. Exhaust air filter                                  | D Exhaust air    |
| 5. Supply fan  |                  |
| 6. Exhaust fan   |                  |
| 7. Condensate drain (the water trap must be installed) |                  |
| 8. Main cable (L = 1,5 m)                              |                  |

## RECU 400HE



### Thermal Efficiency (400 m<sup>3</sup>/h)

Parameters	Supply	Exhaust	Unit	
<b>Intake</b>				
Temperature	-5	0	20	°C
Relative humidity	82	82	45	%
<b>Supply</b>				
Temperature	10,2	11,6		°C
Relative humidity	27	37		%

### Acoustic Data

Speed	1	2	3	Unit
<b>Supply air flow (into air ducts)</b>				
Intake	47	52	60	LWA dB(A)
Supply	57	64	72	
Exhaust air flow (into air ducts)				
Intake	48	54	63	LWA dB(A)
Supply	57	64	72	
Surrounding	38	41	47	

Parameters	Supply	Exhaust	Unit
Nominal air flow	400	400	m <sup>3</sup> /h

### Air Filters

Filter class	F5	G4	
Type	Panel	Filter material	
Dimensions b x h x l	290x195x46	295x305	mm

### Fans Motors

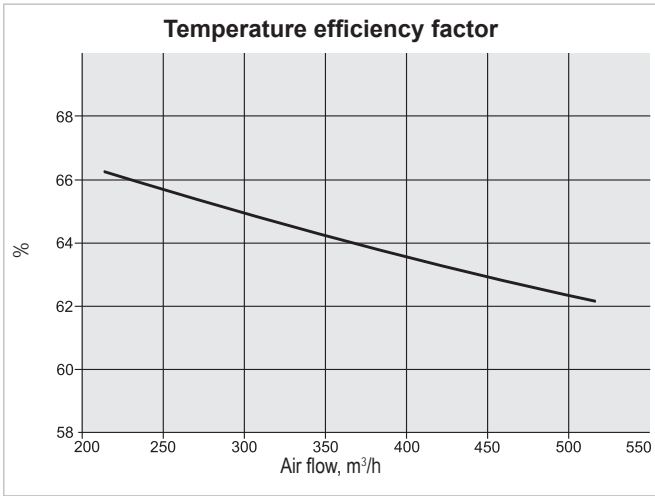
Input power	231	231	W
Rotation speed	2100	2100	rpm
Protection level	IP 44	IP 44	IEC 34-5

### Plate Heat Exchanger

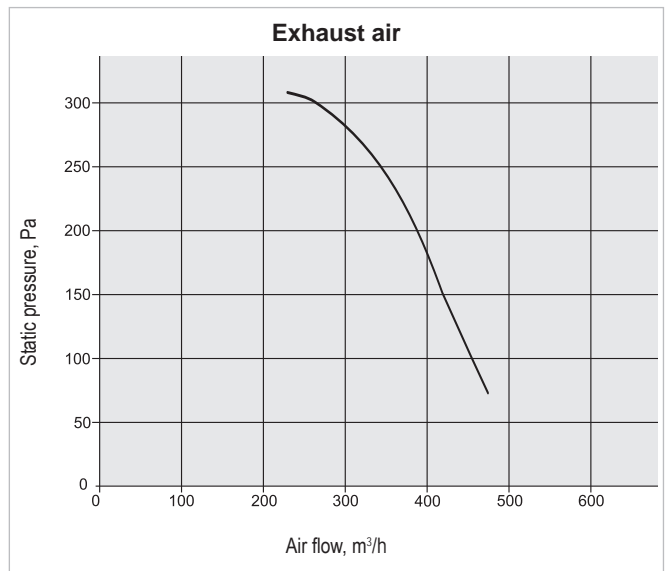
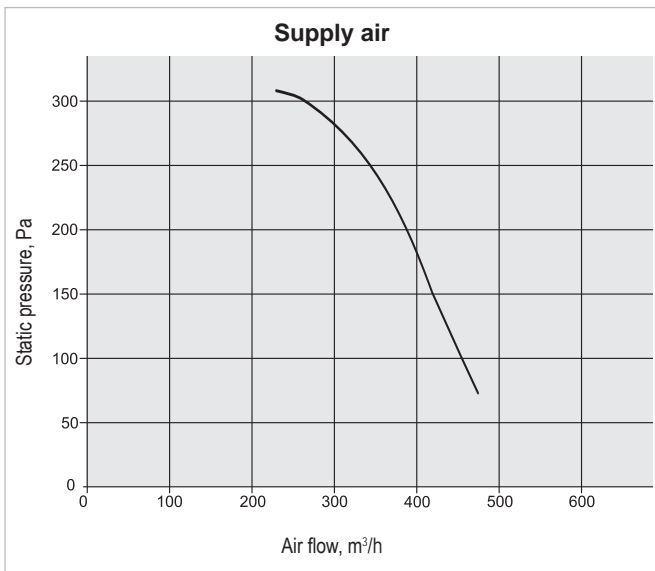
Thermal efficiency	63,8		%
Energy recovery	2,6		kW
Air temperature in/out	-10/9,1	20/4,5	°C
Relative humidity in/out	82/18	45/97	%

### Electric Air Heater

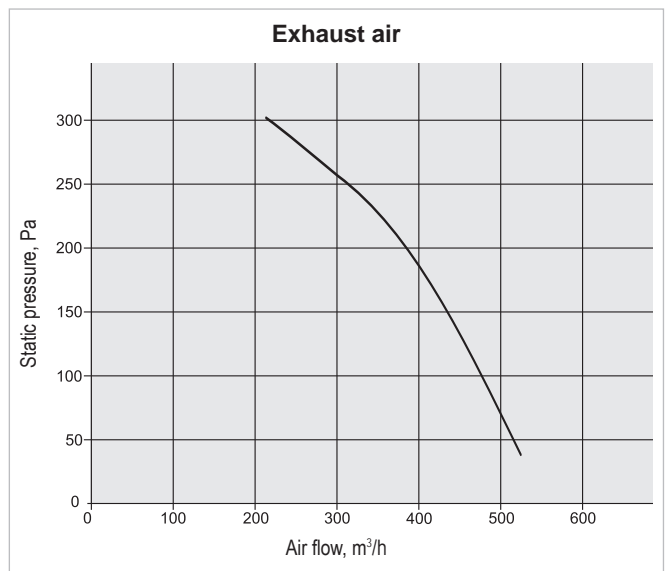
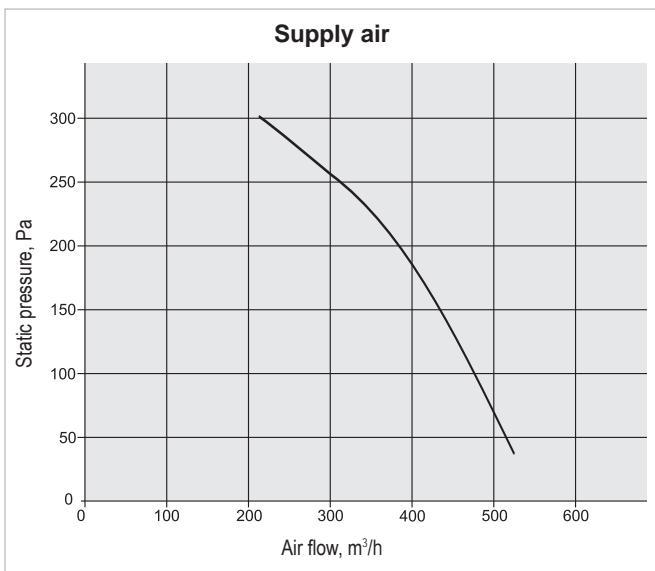
Capacity	2,5		kW
Air temperature in/out	7,2/26,2		°C



### Performance RECU 400VE



### Performance RECU 400HE



Correction factor for F7 class filter approximately – 70 Pa.