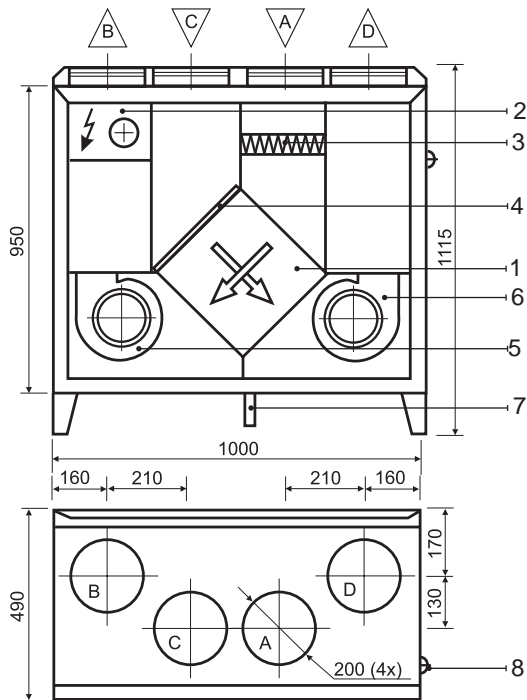


# KOMFOVENT KOMPAKT RECU 700

## RECU 700VE



## Technical data

### RECU 700VE (vertical)

Panel thickness	45 mm
Unit weight	85 kg
Nominal air flow	700 m <sup>3</sup> /h
Supply voltage	1~ 230/50 V/Hz
Maximal operating current	13,6 A
Control system	KOMFOVENT C2, C3

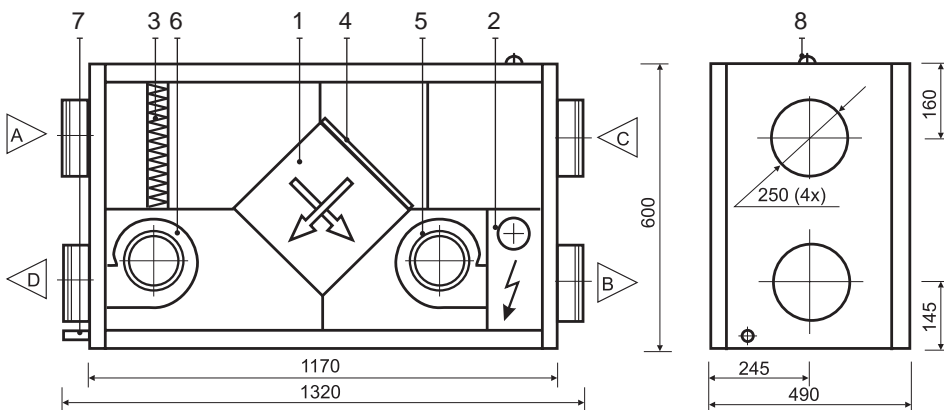
### RECU 700HE (horizontal)

Panel thickness	45 mm
Unit weight	75 kg
Nominal air flow	700 m <sup>3</sup> /h
Supply voltage	1~ 230/50 V/Hz
Maximal operating current	13,6 A
Control system	KOMFOVENT C2, C3

### Design:

- |  |                  |
|--|------------------|
| 1. Plate heat exchanger                                | A Outdoor intake |
| 2. Electric air heater                                 | B Supply air     |
| 3. Supply air filter                                   | C Extract indoor |
| 4. Exhaust air filter                                  | D Exhaust air    |
| 5. Supply fan  |                  |
| 6. Exhaust fan   |                  |
| 7. Condensate drain (the water trap must be installed) |                  |
| 8. Main cable (L = 1,5 m)                              |                  |

## RECU 700HE



### Thermal Efficiency (700 m<sup>3</sup>/h)

Parameters	Supply	Exhaust	Unit
<b>Intake</b>			
Temperature	-5	0	20
Relative humidity	82	82	45
<b>Supply</b>			
Temperature	9,9	11,4	
Relative humidity	27	37	

### Acoustic Data

Speed	1	2	3	
<b>Supply air flow (into air ducts)</b>				
Intake	46	48	54	LwA dB(A)
Supply	55	59	63	
<b>Exhaust air flow (into air ducts)</b>				
Intake	47	49	56	LwA dB(A)
Supply	55	59	63	
Surrounding	37	38	40	

Parameters	Supply	Exhaust	Unit
Nominal air flow	700	700	m <sup>3</sup> /h

### Air Filters

Filter class	F5	G4	
Type	Panel	Filter material	
Dimensions b x h x l	390x235x46	395x300	mm

### Fans Motors

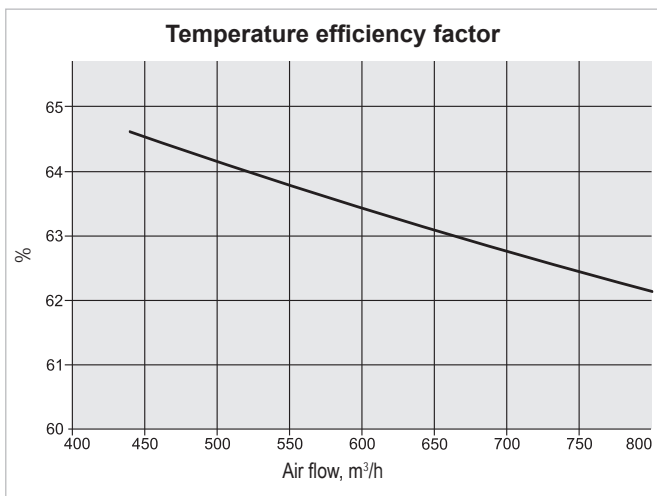
Input power	290	290	W
Rotation speed	2050	2050	rpm
Protection level	IP 44	IP 44	IEC 34-5

### Plate Heat Exchanger

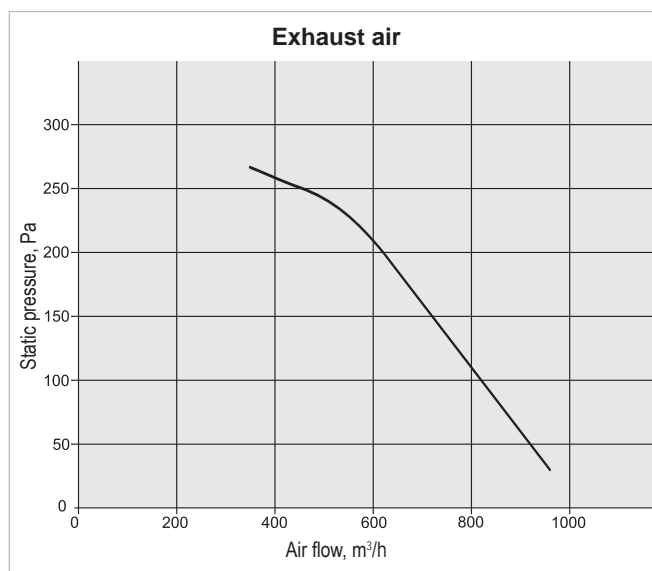
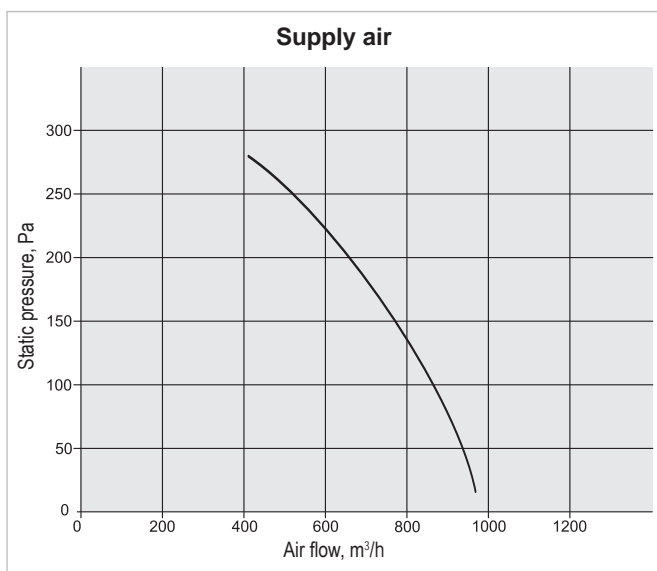
Thermal efficiency	62,6		%
Energy recovery	4,4		kW
Air temperature in/out	-10/8,8	20/4,7	°C
Relative humidity in/out	82/19	45/96	%

### Electric Air Heater

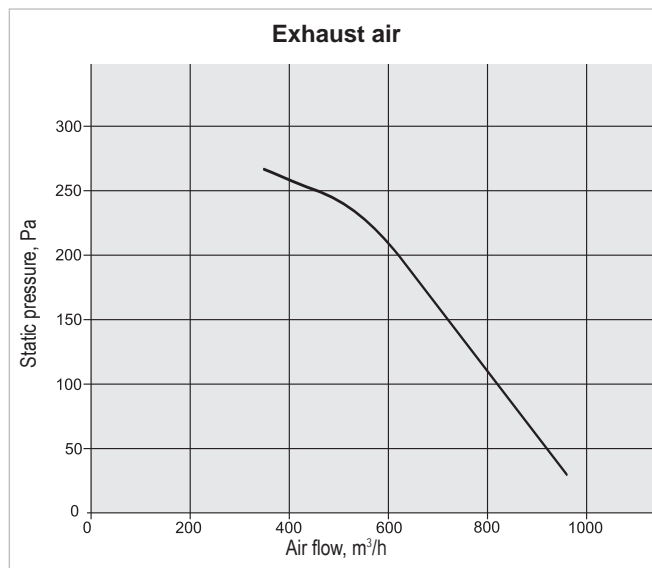
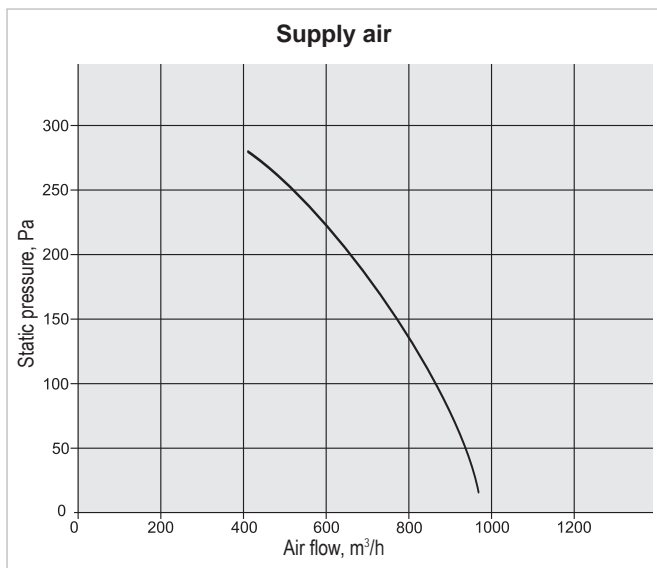
Capacity	2,5		kW
Air temperature in/out	8,8/19,5		°C



### Performance RECU 700VE



### Performance RECU 700HE



Correction factor for F7 class filter approximately – 70 Pa.