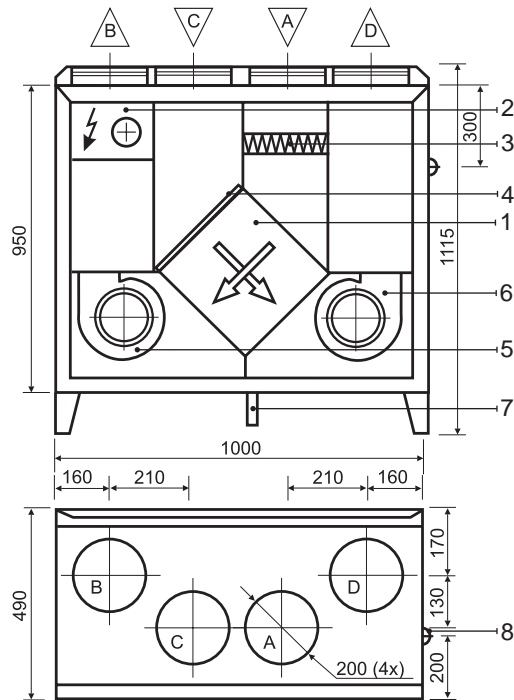
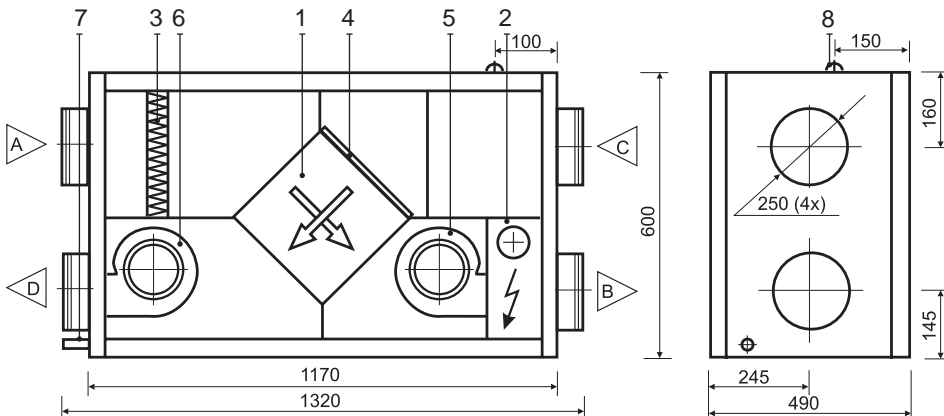


# KOMFOVENT KOMPAKT RECU 900

## RECU 900VE



## RECU 900HE



### Thermal Efficiency (900 m<sup>3</sup>/h)

Parameters	Supply	Exhaust	Unit	
<b>Intake</b>				
Temperature	-5	0	20	°C
Relative humidity	82	82	45	%
<b>Supply</b>				
Temperature	9,7	11,2		°C
Relative humidity	27	37		%

### Acoustic Data

Speed	1	2	3	Unit
<b>Supply air flow (into air ducts)</b>				
Intake	48	50	55	Lwa dB(A)
Supply	54	59	64	
<b>Exhaust air flow (into air ducts)</b>				
Intake	48	50	56	Lwa dB(A)
Supply	54	59	64	
Surrounding	37	38	41	

## Technical data

### RECU 900VE (vertical)

Panel thickness	45 mm
Unit weight	90 kg
Nominal air flow	900 m <sup>3</sup> /h
Supply voltage	3~ 400/50 V/Hz
Maximal operating current	10,3 A
Control system	KOMFOVENT C2, C3

### RECU 900HE (horizontal)

Panel thickness	45 mm
Unit weight	78 kg
Nominal air flow	900 m <sup>3</sup> /h
Supply voltage	3~ 400/50 V/Hz
Maximal operating current	10,3 A
Control system	KOMFOVENT C2, C3

### Design:

1. Plate heat exchanger
  2. Electric air heater
  3. Supply air filter
  4. Exhaust air filter
  5. Supply fan
  6. Exhaust fan
  7. Condensate drain (the water trap must be installed)
  8. Connection of main cable
- A Outdoor intake  
B Supply air  
C Extract indoor  
D Exhaust air

Parameters	Supply	Exhaust	Unit
Nominal air flow	900	900	m <sup>3</sup> /h

### Air Filters

Filter class	F5	G4	
Type	Panel	Filter material	
Dimensions bxxhxl	390x235x46	395x300	mm

### Fans Motors

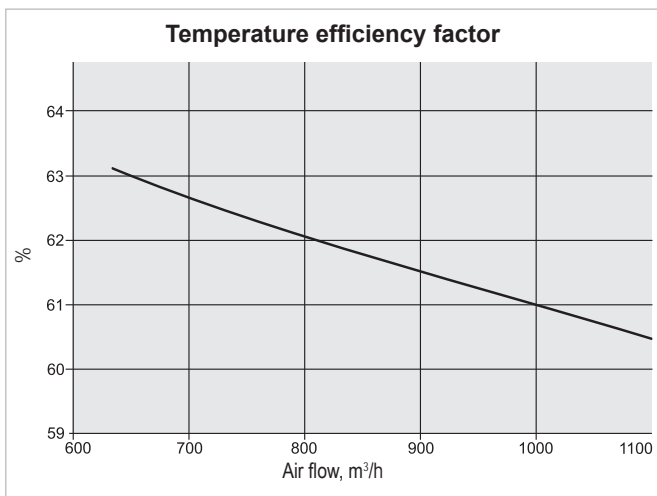
Input power	390	390	W
Rotation speed	1850	1850	rpm
Protection level	IP 44	IP 44	IEC 34-5

### Plate Heat Exchanger

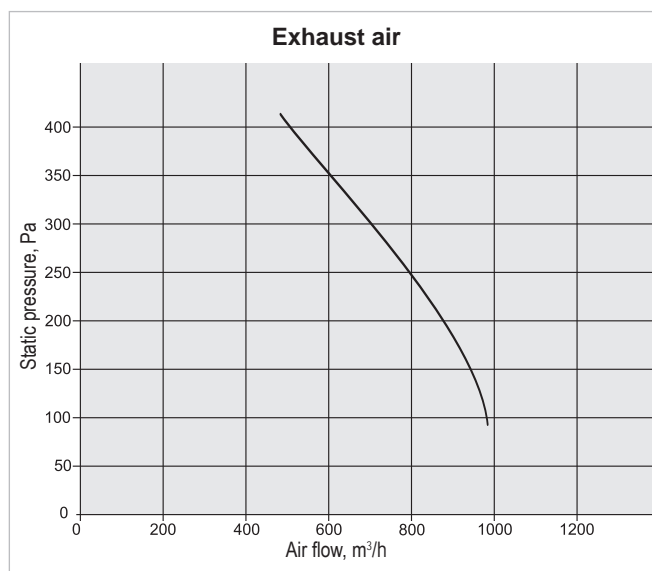
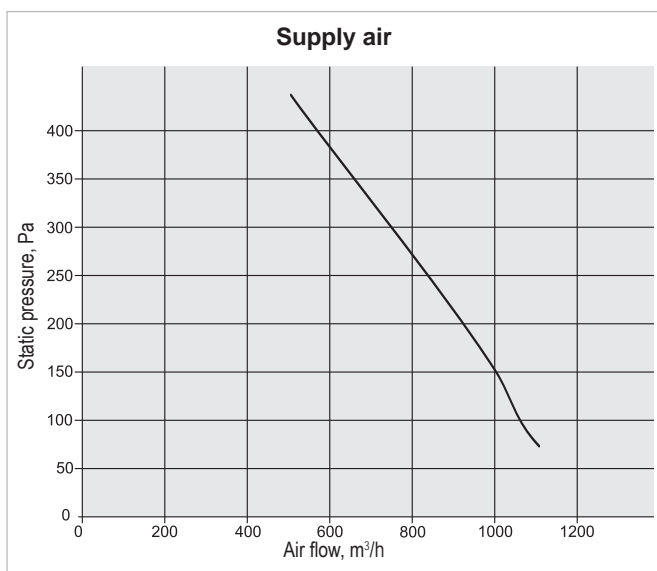
Thermal efficiency	61,5		%
Energy recovery	5,6		kW
Air temperature in/out	-10/8,8	20/4,7	°C
Relative humidity in/out	82/19	45/96	%

### Electric Air Heater

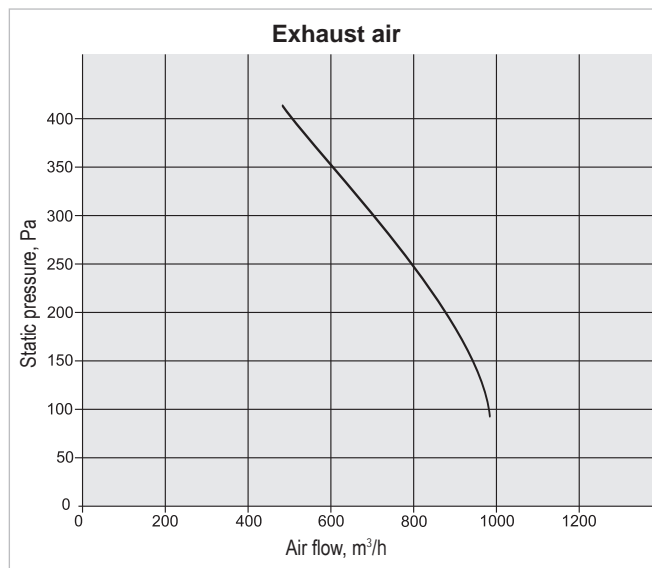
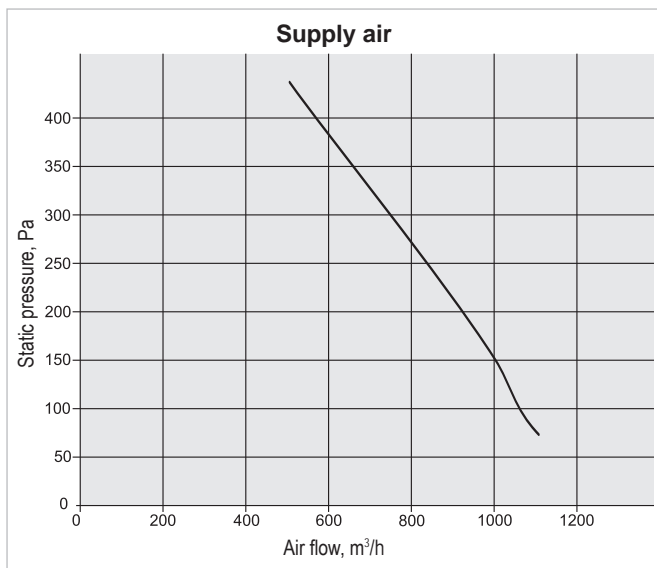
Capacity	4,5		kW
Air temperature in/out	4/19		°C



### Performance RECU 900VE



### Performance RECU 900HE



Correction factor for F7 class filter approximately – 70 Pa.