



HOME ABOUT US WHAT'S NEW **OUR PRODUCTS** SHARING OUR KNOWLEDGE BUYING PRODUCTS CONTACT US HELP

Commercial Ventilation

Remote Ventilation Management System

Wireless controller



Description

The Vent-Axia Wire-less Remote Ventilation Management System gives complete control of the indoor environment. It gives all the functions of a conventional T-Series fan controller - including 'eco' setting from a single wall mounted controller.

About this product



Information

- ▶ Description
- ▶ Typical Specification

At a Glance...

Developed in conjunction with leading specifiers and installers to solve the problem of time consuming installation and obtrusive wiring.

Eliminates the need for long wiring runs.

Dramatically reduced installation costs.

All the functions of up to 4 conventional T-Series multi unit fan controllers.

Controls groups of fans in 4 zones from a single wall mounted Wire-less transmitter.

Wire-less has a radius

ONLINE SHOPPING:
Products for your
Home

Vent-Axia Industrial
Ventilation

Commercial Ventilation

Commercial Air
Curtains

Roof Units Industrial
Products

Domestic Ventilation

Air Conditioning

Clean Air Systems
(Heat Recovery)

Cooling Products

Heating Products

Hygiene Products

Sensors / Controllers &
Accessories

Product Overview

Product Brochures

Product Specifications

The one to four channel system will enable centralised control of one to 16 fans (in groups of up to four). Typical uses range from a 9" T-Series fan, receiver and transmitter installed in a large domestic kitchen to a complete customised building ventilation management system controlled centrally using up to 16 fans, with a variety of Vent-Axia sensors.

[▲ back to top](#)

How it works

Vent-Axia's Wire-less wall mounted controller replaces up to four multi unit controllers. It communicates using radio signals to receivers, within a 30m range, located next to fan installations throughout the building. The system economically replaces traditional wiring, saving installation time, eliminating unsightly wiring, and providing complete freedom in the secure siting of the controller.

[▲ back to top](#)

Easy to use

At the push of a button, Wire-less lets you 'see' what the fans are doing. Changing the setting of any group of fans is easy.



[▲ back to top](#)

Secure

The controller can be securely fixed to a wall anywhere.

range of 30 metres within a building.

FAQ's Answered

Wire-less transmitter is wall mounted for security. 30m range includes walls within a building.

Receivers can be fixed out of sight eg. above ceiling panels.

A label set allows groups of fans to be identified.

Use with all T-Series or Standard range fans.

[▲ back to top](#)

Less Damage

In public areas there is no need for unsightly conduit, or to re-route cables.

[▲ back to top](#)

Neat

Wire-less needs no cable connection between groups of fans and the controller, so installation takes only a fraction of the time with a minimum of fuss.

[▲ back to top](#)

Flexible

Vent-Axia Wire-less allows further fans and receivers to be added at a later date.

[▲ back to top](#)

Cost saving

One Wire-less controller can replace several controllers, saving you money.

When 'Auto' mode is selected fans in each zone can be set to operate in conjunction with Humidity Sensors, TimeSwitches, Personnel Detectors and ThermoSwitches.

Description 418MHz (UK only)	Stock Ref. No.
One four channel kit containing one transmitter and one receiver. For use with up to 4 fans.	471579
Additional receiver (suitable for use with up to 4 fans)	471575

[▲ back to top](#)

Benefits

Extensions or additional buildings can be easily accommodated into the an existing Wire-less System. Structures such as listed buildings can now be ventilated with minimal impact on the existing structure.

Wire-less can be easily installed in an enormous variety of applications, including:- assembly rooms, banks, discos, gymnasias, hospitals, laboratories, larger domestic premises, open plan offices, restaurants, swimming baths, schools, shops, warehouses and public houses

 [back to top](#)

Approval

The Vent-Axia Wire-less Remote Ventilation Management System is MPT 1340 W.T. exempt.

**Supply voltage to receiver/fans only:
220-240V/1/50Hz**

 [back to top](#)

Easy installation

Dramatically reduced installation costs are one of the immediate benefits of the Wire-less system, as well as eliminating the need for unsightly wiring.

The receiver and fan are connected to a local mains supply, and any Vent-Axia sensor can be connected to the receiver for auto mode control. Wire-less System is supplied complete with a long-life 9V power pack with a typical life of 2 years.

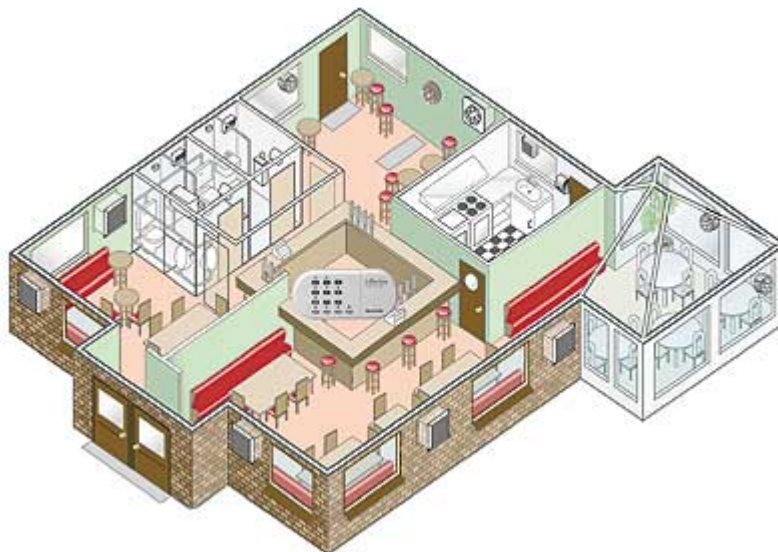
Typical application showing how a Vent-Axia system can easily be installed to all areas of a public house with minimum disruption.



[▲ back to top](#)

Typical Application

Typical application showing how a Vent-Axia system can easily be installed to all areas of a public house with minimum disruption.

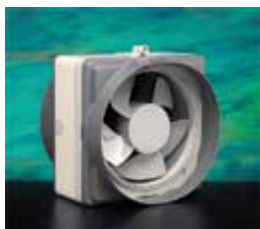


Kitchen

In addition to the canopy over the hob, a Vent-Axia T-Series window fan with a TSC control will help your chef and kitchen staff to keep cool.

**Ladies and Gents WC's - Channel 1**

Ventilation is via discreet grilles connected to an in-line fan in the false ceiling. The Wire-less Receiver provides On/Off function.

**Public Bar - Channel 2**

A typical public bar will require two size 9 extract fans. Shown here is a Vent-Axia Standard Range wall fan and a Standard Range window fan on intake.

**Saloon bar - Channel 3**

Two size 12 wall mounted Vent-Axia T-Series fans are illustrated. Reversible and fully speed controllable using the Wire-less controller.

**Restaurant - Channel 4**

This restaurant area has three size 12 wall mounted T-Series fans fitted on the perimeter walls. Air Quality Sensors are connected to the Wire-less Receivers for completely automatic control.





Conservatory/restaurant - Channel 4

This area has two window mounted Vent-Axia Standard Range fans to combat solar heat gain on warm summer days and extract stale air from the restaurant. A thermostatic sensor connected to the Wire-less Receiver provides automatic control. Both the restaurant receivers are tuned to channel 4.

[▲ back to top](#)

Typical Specification

Supply and install a Wire-less control system as manufactured by Vent-Axia Ltd, Fleming Way, Crawley, West Sussex, RH10 2NN Telephone: 01293 526062.

The system shall consist of a wall mounted controller-transmitter unit located conveniently out of the public area. The transmitter shall be capable of controlling one to four single or groups of Vent-Axia T-Series or Standard range fans located within a 30 meter radius of the controller.

The Wire-less receivers shall be located with each group of fans and may be installed out of sight. Automatic controls such as an Air Quality Sensor or a thermostat may be connected to the receivers to provide automatic switching.

[▲ back to top](#)