



- HOME
- ABOUT US
- WHAT'S NEW
- OUR PRODUCTS**
- SHARING OUR KNOWLEDGE
- BUYING PRODUCTS
- CONTACT US
- HELP

Commercial Ventilation

ONLINE SHOPPING:
Products for your Home

Vent-Axia Industrial Ventilation

Commercial Ventilation

Commercial Air Curtains

Roof Units Industrial Products

Domestic Ventilation

Air Conditioning

Clean Air Systems (Heat Recovery)

Cooling Products

Heating Products

Hygiene Products

Sensors / Controllers & Accessories

Product Overview

LoWatt T-Series Window Model



Description

The LoWatt T-Series range is fitted with a new low energy DC motor, developed to improve performance, lower running costs and maintain T-Series' rugged reliability.



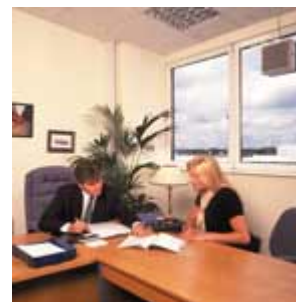
About this product



Information

- ▶ Description
- ▶ Controllers
- ▶ Performance
- ▶ Dimensions
- ▶ Catalogue PDF

At a Glance...



Product Brochures**Product Specifications**

Designed for installation through single or double glazing and material up to 32mm thick. Greater thicknesses can be accommodated using extended fixing rod sets. Alternatively, the T-Series range can be used in conjunction with Vent-Axia ventilation accessories in flexible and rigid ducting systems to suit individual requirements. The fan can also be mounted in a fixing plate on walls or above ceilings.

Why choose LoWatt?
click [here](#) to find out more...

 **back to top**

Instantaneous Shutter

With energy saving in mind LoWatt T-Series models are supplied complete with an integral instantaneous automatic louvre shutter concealed behind the interior grille. With a LoWatt T-Series Controller the fan will operate on both extract and intake, suitable for any angle of mounting. The shutter is electronically controlled by an actuator with a damped action giving quiet operation during instant opening and closing. The interlocking edges of the shutter blades provide maximum backdraught protection when the ventilating unit is used with a LoWatt T-Series controller.

 **back to top**

Wire-less Control

Every LoWatt T-Series Wire-less FM Controller uses unique digital signals to ensure trouble free operation. The controller will transmit through walls and floors allowing complete flexibility of design to control fans up to 30m away.

Wire-less FM Controllers can dramatically reduce installation time and costs. The Immediate benefit being the elimination of unsightly wiring. Wire-less FM Controllers can be easily installed in a variety of applications including assembly rooms, banks, hospitals, laboratories, restaurants, schools, shops and public houses.

 **back to top**

Extract/intake fans in 2 sizes: Size 9 and 12.

Patented electronic shutter system ensures quiet trouble free operation.

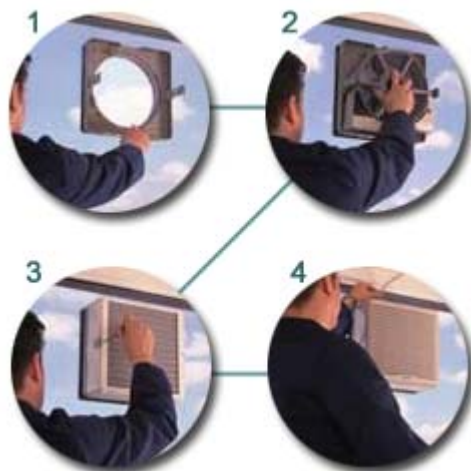
Up to **80% energy saving.**

FAQ's Answered

- Long life LoWatt motors last twice as long as conventional motors.
- Designed to comply with International Safety Standards.
- Shutter open only available.
- **5 year guarantee**
- Wired or Wire-less fan models available.

Fitting

Fitting through a round hole in the window, LoWatt T-Series is supplied with fixing screws which are finger-tightened to ensure even pressure and a watertight seal on a smooth outside surface.



Guide to thickness of glass - vertical panes

Pane size		Normal Conditions Glass Thickness	Exposed country, coastal, tower Glass Thickness
m ²	ft ²	(mm)	(mm)
0.5	5.4	3	4
1.0	10.8	4	5
1.5	16.0	5	6
2.0	21.5	6	10

Windows in exposed positions

Where windows are subject to severe wind turbulence such as exposed, coastal positions or high rise buildings, it is sometimes advisable to fit roof models using the external cowl as a wind baffle.



NEW LoWatt T-Series Controller



LoWatt T-Series Controllers are available in both **Wired** and **Wire-less FM** versions. The three speed push button surface mounted controllers provide intake/extract and shutter only options and auto mode position for use with external sensors.

Wired versions are connected to the fan using a plug-in Safety Extra Low Voltage 2-core signal cable supplied (10m), allowing simple and safe installation. Alternatively, the **Wire-less FM** controller offers full control without the need for any wiring, ideal for premises where installations need to be carried out with minimum disruption or where surface wiring can be classed as unsightly or obtrusive.

[▲ back to top](#)

Sensors

Can be used in conjunction with a LoWatt T-Series Controller

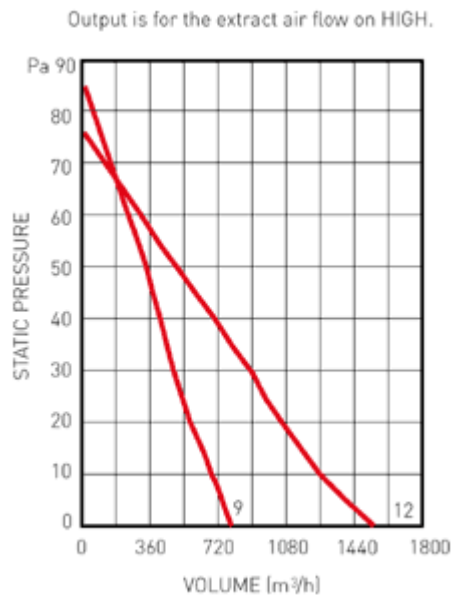
Ambient Response Humidity Sensor - Self programming electronic On/Off wall mounted humidity sensor which reacts to any rapid increase in humidity and temperature. Night time RH increment setback feature

Electronic Humidity Sensor - Adjustable set point, solid state controller. Pullcord provides manual override. Adjustable from 65% to 90%RH.

Air Quality Sensor - Automatically reacts to the depletion of air quality, sensing tobacco smoke, smells and toilet odours to regulate mechanically ventilated areas

[▲ back to top](#)

Performance



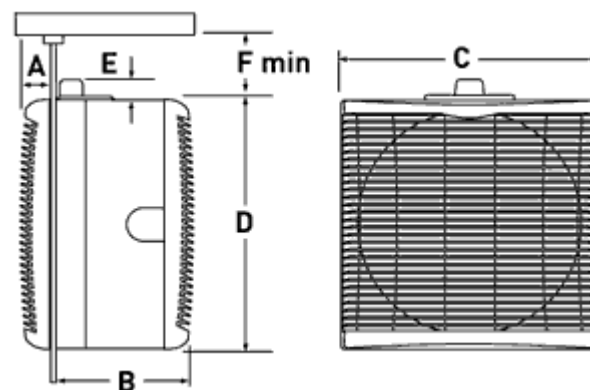
Unit Size		LoWatt TX9WW Wireless	LoWatt TX9WW
Stock Ref. No.		45 61 69	45 61 65
Amps @ 240V		0.35	0.35
Extract Performance m³/h	Low	332	332
	Med	571	571
	High	761	761
Watts (high)		30.8	30.8
dB(A) (med) @ 3m		40	40

Unit Size		LoWatt TX12WW Wireless	LoWatt TX12WW
Stock Ref. No.		45 61 77	45 61 73
Amps @ 240V		0.73	0.73
Extract		600	660

Performance	Med	1295	1295
m³/h	High	1550	1550
Watts (high)		68.6	68.6
dB(A) (med) @ 3m		46	46

Recommended controller:Wireless Controller **Stock Ref. No. 45 58 74**Wired Controller **Stock Ref. No. 45 58 73**
 [back to top](#)

Dimensions (mm)



Size	A	B	C	D	E	F	Fixing Hole	Weight kg
230mm	39	150	304	302	19	54	260	5.35
300mm	41	177	381	378	19	54	337	7.74

Catalogue PDF


[\[Click here to download the PDF for this range\]](#)
 [back to top](#)

